

INTRODUCING



QUEEN'S SQUARE

Just fifteen minutes from central London and Gatwick Airport, Queen's Square is a new development in South London's most exciting destination.

Six residential buildings linked by a series of public streets and squares will form a lively hub right at the heart of Croydon's major cultural, retail and transport amenities.

Phase One of Queen's Square and the first of the six buildings is Highgrove Tower, a collection of studio, one, two and three bedroom apartments offering the ultimate in stylish contemporary living.

METRO STYLE LIVING



Computer-generated image for illustrative purposes only. New public place and future phases subject to planning.



THE MASTERPLAN

In a prime position a few minutes' walk from East Croydon station and central to local amenities, shopping and culture, Queen's Square is perfectly placed to benefit from a multi-million pound regeneration programme that will see the area transformed into South London's most desirable place to live, work and visit.

* By the Croydon Partnership (Unibail-Rodamco-Westfield and Hammerson)

THE FUTURE OF CROYDON

£5.25bn REGENERATION PROGRAMME

ECONOMIC POWERHOUSE OF SOUTH LONDON

SILICON VALLEY OF SOUTH LONDON



Future Croydon cultural quarter

ESTABLISHED ARTS & CULTURAL QUARTER

HOME TO 1,000 DIGITAL & CREATIVE START-UPS

FAST CONNECTIONS TO LONDON, GATWICK & BEYOND

£1.5bn WESTFIELD SHOPPING COMPLEX



Future Westfield Croydon shopping centre*

Source: Jones Lang LaSalle (JLL)
* By the Croydon Partnership (Unibail-Rodamco-Westfield and Hammerson). Subject to planning.



Computer-generated image for illustrative purposes only.

DISCOVER METRO STYLE LIVING

Known locally as 'the Nestlé building', Highgrove Tower has a rich history and is an important local landmark. In the 1970s and 1980s the iconic Greyhound music venue on the ground floor hosted pioneering acts such as David Bowie, Queen and Talking Heads.

The tower's next iteration will see Highgrove Tower right in the heart of a new cultural quarter, offering premium apartments with a concierge, residents' lounge, gym studio and roof gardens.*



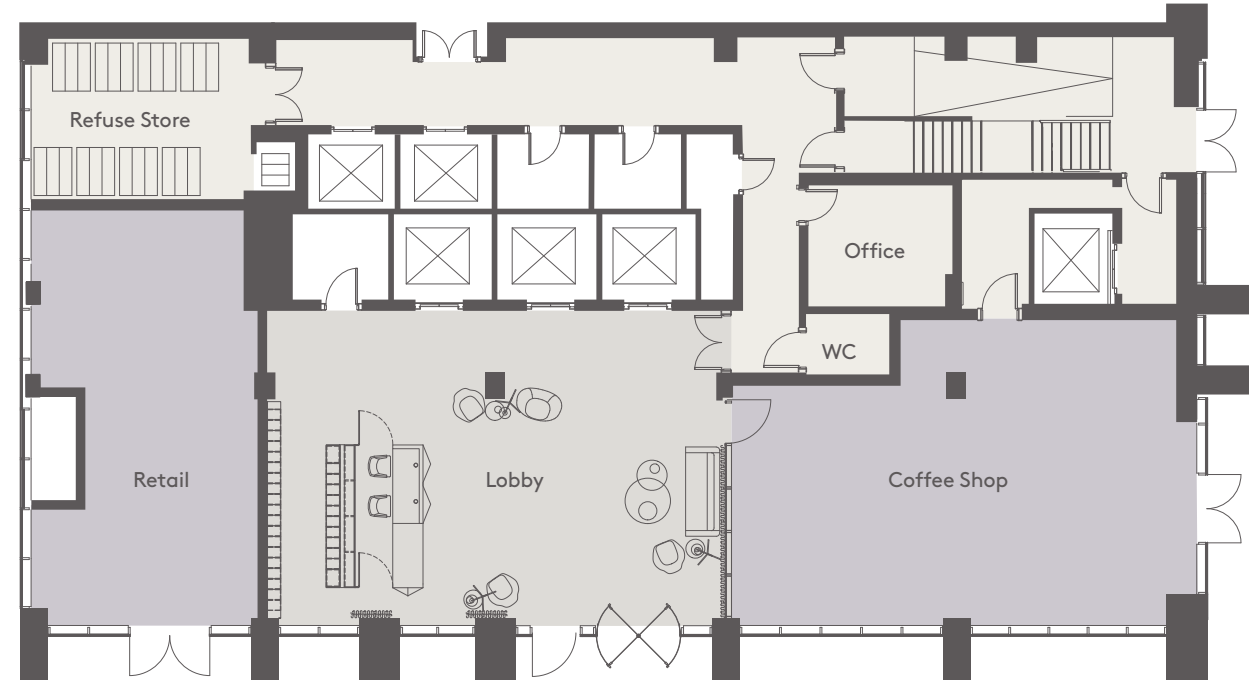
Computer-generated image for illustrative purposes only.

“Highgrove Tower’s reinvigoration as a residential building will create a new energy and soul in the centre of one of London’s most culturally exciting districts”

FRANK MCGOLDRICK
Aedas Global Design Principal, London

* Subject to planning.

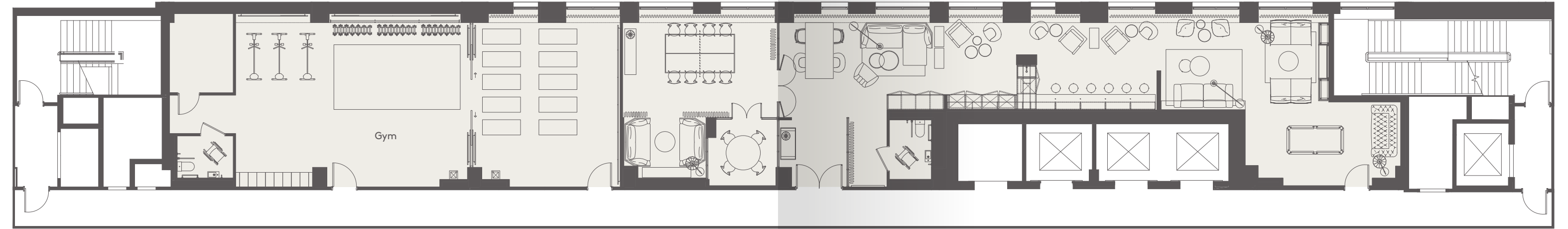
HIGHGROVE TOWER



GROUND FLOOR AMENITIES

The spacious, high-ceilinged entrance lobby at Highgrove Tower creates an impressive sense of arrival as you step through its doors.

The sleek and elegant design features gold accents in the flooring that reference the spectacular statement light fitting above, and a comfortable seating area for meeting and greeting friends.

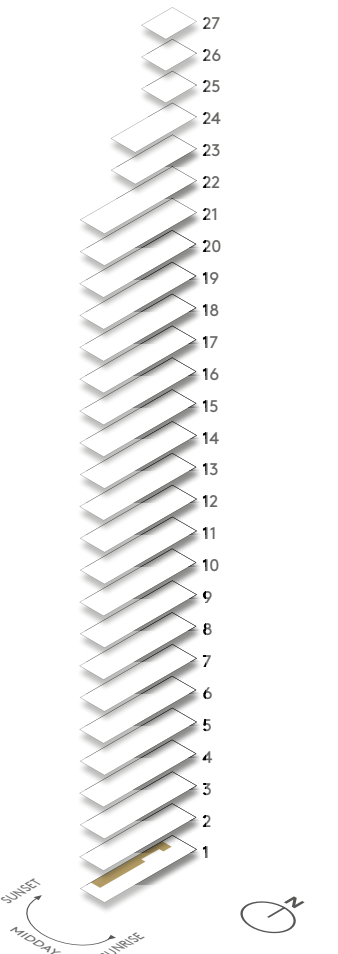


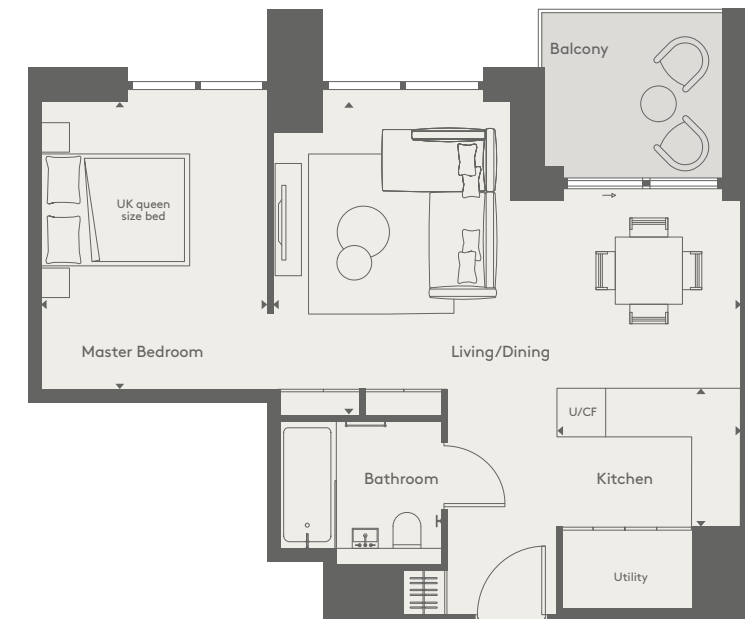
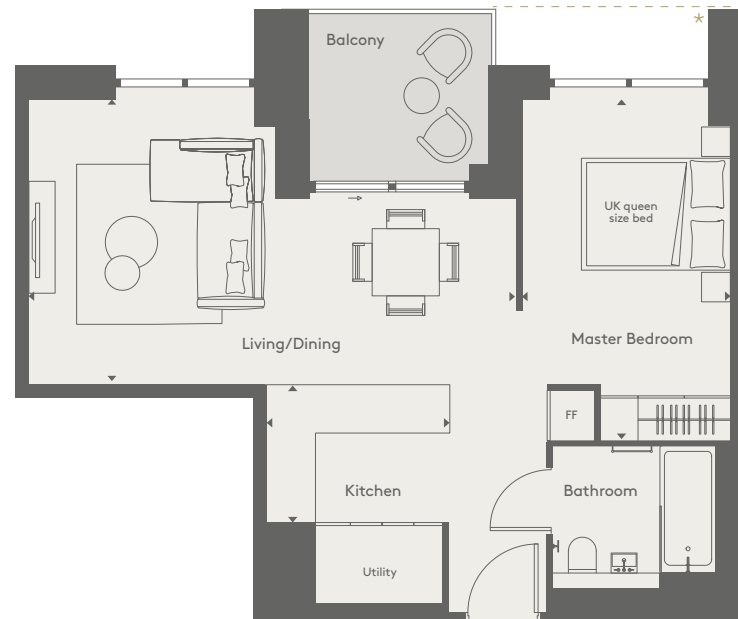
FIRST FLOOR AMENITIES

Living at Queen's Square gives you access to a range of high-end amenities designed to make life easier. A coffee shop* on the ground floor means you can get your caffeine kicks whenever you like, and a purpose-designed co-working space makes it easy to work away from the office. The welcoming reception lobby will have a concierge desk to help you arrange deliveries, receive packages and order taxis, and the on-site exercise studio is perfect for a Pilates or yoga session before work.

DISCLAIMER

Plans shown are for illustrative purposes only and not to scale. Exact layout may vary.
 * Ground floor coffee shop and the retail space located to the left of the lobby, is subject to future planning permission being granted by LBC.





TYPE 1 + 1A* STUDIO APARTMENT

526 sq ft | 48.9 sq m

APARTMENTS

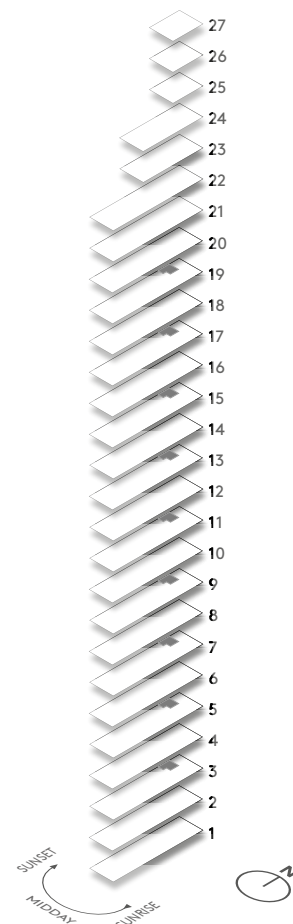
301/501/701/901/1101/1301/1501/1701
1901*

Kitchen	8'0" x 6'1"	245.0 cm x 185.0 cm
Living/Dining	12'4" x 21'4"	377.5 cm x 651.0 cm
Master Bedroom	14'7" x 8'11"	450.5 cm x 273.0 cm
Balcony	7'10" x 6'4"	239.0 cm x 194.0 cm
Total internal area	526 sq ft	48.9 sq m
Total external area	50 sq ft	4.6 sq m

* Apartment 1901 is a Type 1A and has an extended balcony (as outlined above), with a total external area of 70 sq ft | 6.5 sq m

FF = Fridge freezer
Combination oven and microwave located beneath hob

DISCLAIMER
There are minor variations to the total size shown for this apartment type based on floor level, please refer to the individual floorplan as provided by your sales team member. Floorplans shown are approximate measurements only, are not to scale and exact layout may vary. Furniture is for visual reference only and not included in the purchase price.



TYPE 2 STUDIO APARTMENT

525 sq ft | 48.8 sq m

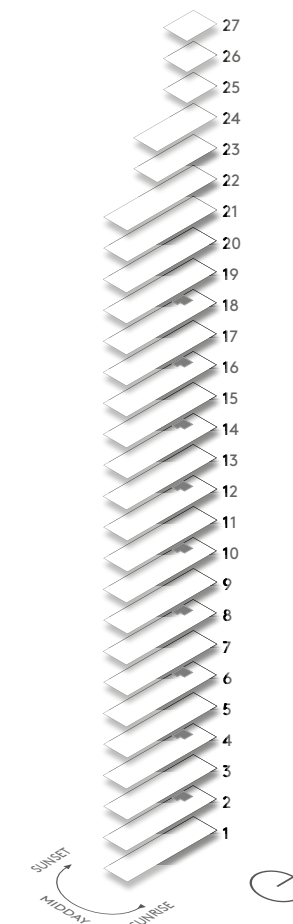
APARTMENTS

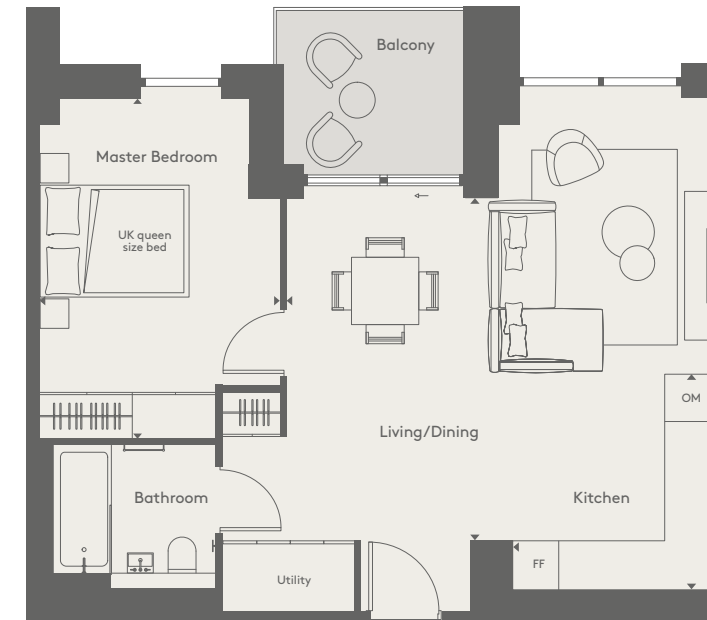
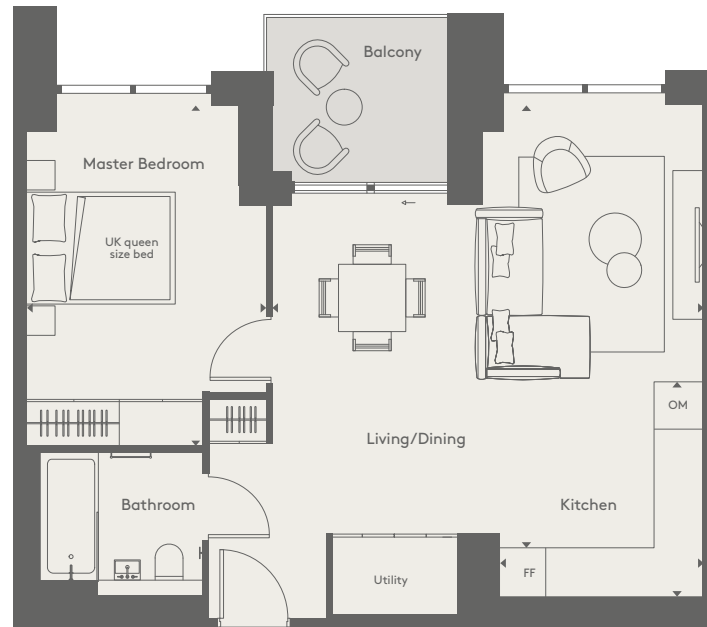
201/401/601/801/1001/1201/1401/1601/1801

Kitchen	8'0" x 6'2"	245.0 cm x 189.0 cm
Living/Dining	11'2" x 20'4"	342.5 cm x 622.0 cm
Master Bedroom	12'5" x 9'11"	377.5 cm x 302.0 cm
Balcony	7'10" x 6'4"	239.0 cm x 194.0 cm
Total internal area	525 sq ft	48.8 sq m
Total external area	50 sq ft	4.6 sq m

U/CF = Undercounter fridge
Combination oven and microwave located beneath hob

DISCLAIMER
There are minor variations to the total size shown for this apartment type based on floor level, please refer to the individual floorplan as provided by your sales team member. Floorplans shown are approximate measurements only, are not to scale and exact layout may vary. Furniture is for visual reference only and not included in the purchase price.





TYPE 1 ONE BEDROOM APARTMENT

600 sq ft | 55.7 sq m

APARTMENTS

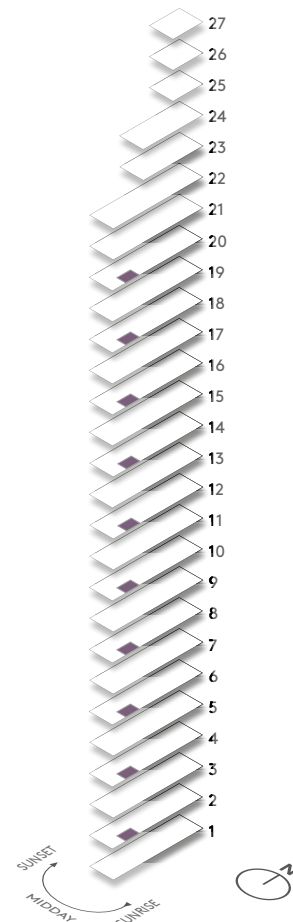
206 / 406 / 606 / 806 / 1006 / 1206 / 1406 / 1606 / 1806 / 2006

Kitchen	10'0" x 8'9"	305.0 cm x 266.0 cm
Living/Dining	18'8" (9'2") x 14'3" (9'0")	568.0 cm (285.0) x 438.0 cm (274.0)
Master Bedroom	14'7" x 10'4"	450.5 cm x 316.0 cm
Balcony	7'7" x 6'4"	230.0 cm x 194.0 cm
Total internal area	600 sq ft	55.7 sq m
Total external area	48 sq ft	4.5 sq m

FF = Fridge freezer OM = Separate oven and microwave

DISCLAIMER

There are minor variations to the total size shown for this apartment type based on floor level, please refer to the individual floorplan as provided by your sales team member. Floorplans shown are approximate measurements only, are not to scale and exact layout may vary. Furniture is for visual reference only and not included in the purchase price.



TYPE 1A + 1D* ONE BEDROOM APARTMENT

598 sq ft | 55.6 sq m

APARTMENTS

103 / 304 / 504 / 704 / 904 / 1104

1304* / 1504* / 1704* / 1904*

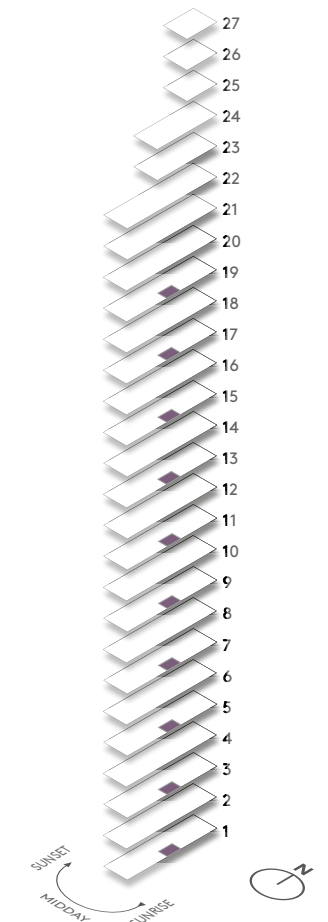
Kitchen	10'0" x 8'9"	305.0 cm x 266.0 cm
Living/Dining	18'8" (9'2") x 14'9" (9'0")	568.0 cm (278.5) x 454.0 cm (274.0)
Master Bedroom	14'7" x 10'4"	450.5 cm x 316.0 cm
Balcony	7'10" x 6'4"	239.0 cm x 194.0 cm
Total internal area	598 sq ft	55.6 sq m
Total external area	50 sq ft	4.6 sq m

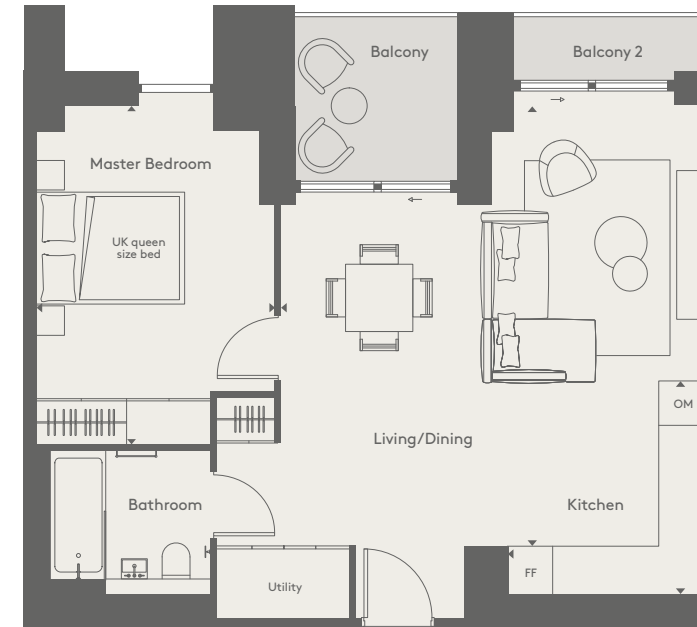
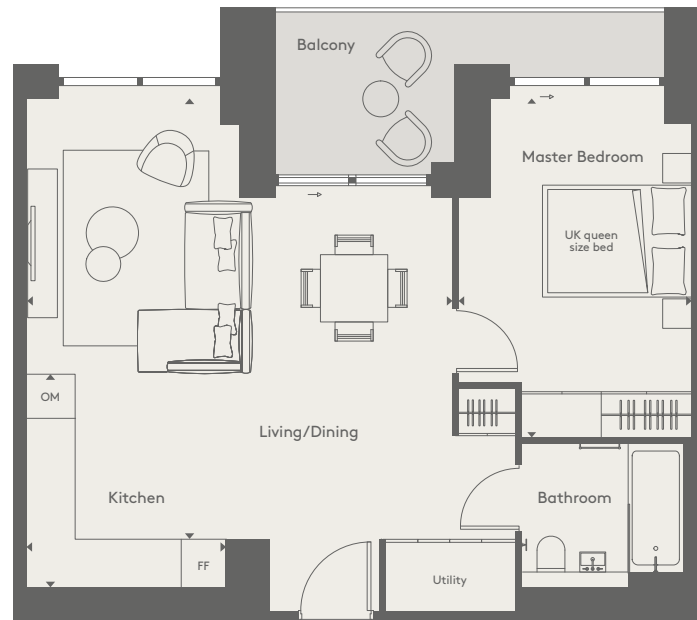
* Type 1D apartments have a double window façade to the master bedroom and a single window to Living/Dining area

FF = Fridge freezer OM = Separate oven and microwave

DISCLAIMER

There are minor variations to the total size shown for this apartment type based on floor level, please refer to the individual floorplan as provided by your sales team member. Floorplans shown are approximate measurements only, are not to scale and exact layout may vary. Furniture is for visual reference only and not included in the purchase price.





TYPE 1B ONE BEDROOM APARTMENT

593 sq ft | 55.1 sq m

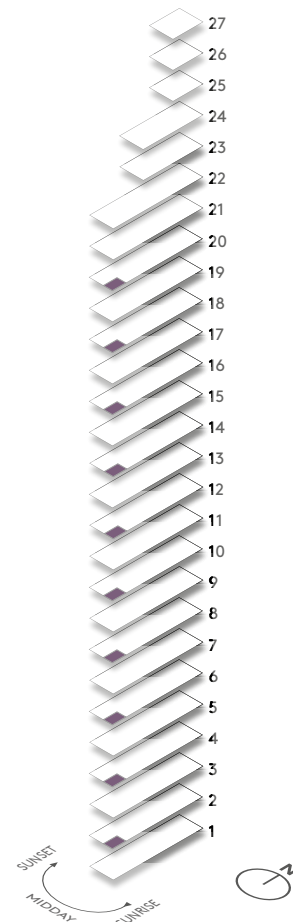
APARTMENTS

207 / 407 / 607 / 807 / 1007 / 1207 / 1407 / 1607 / 1807 / 2007

Kitchen	10'0" x 8'8"	305.0 cm x 265.0 cm
Living/Dining	18'8" (9'2") x 14'9" (9'0")	568.0 cm (285.0) x 454.0 cm (274.0)
Master Bedroom	14'7" x 10'1"	450.5 cm x 307.0 cm
Balcony	7'10" x 6'4"	239.0 cm x 194.0 cm
	+ 9'2" x 2'0"	+ 279.0 cm x 61.0 cm
Total internal area	593 sq ft	55.1 sq m
Total external area	68 sq ft	6.3 sq m

FF = Fridge freezer
Combination oven and microwave located beneath hob

DISCLAIMER
There are minor variations to the total size shown for this apartment type based on floor level, please refer to the individual floorplan as provided by your sales team member. Floorplans shown are approximate measurements only, are not to scale and exact layout may vary. Furniture is for visual reference only and not included in the purchase price.



TYPE 1C ONE BEDROOM APARTMENT

600 sq ft | 55.7 sq m

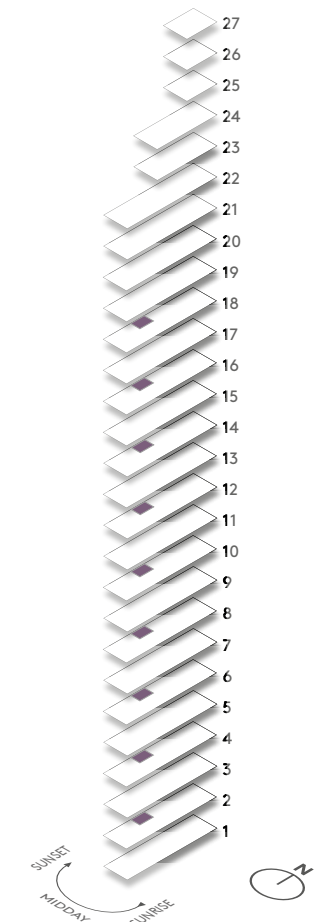
APARTMENTS

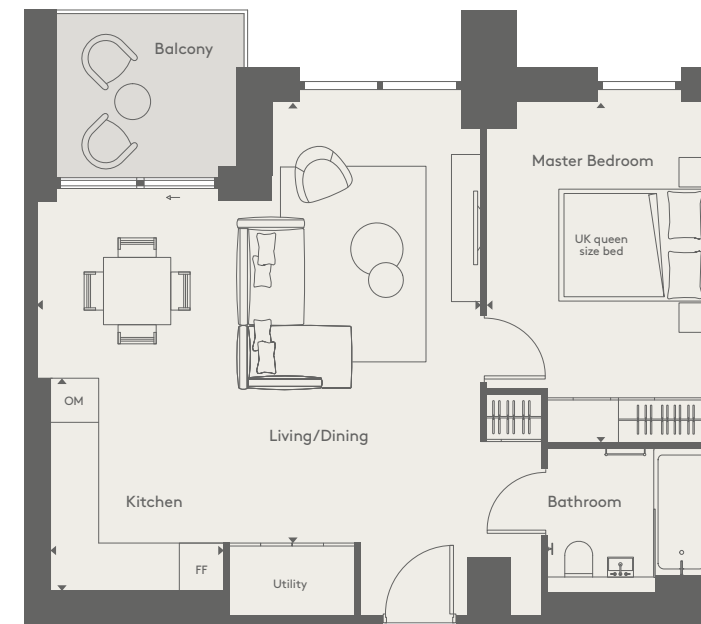
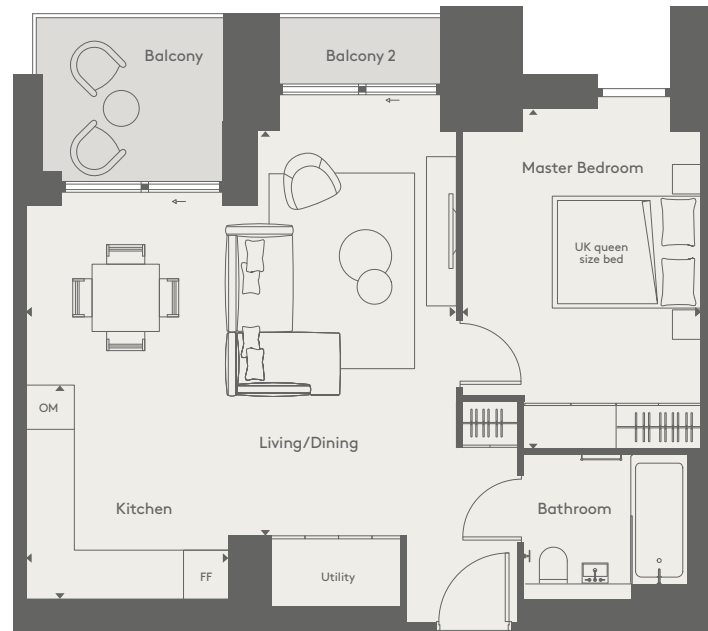
209 / 409 / 609 / 809 / 1009 / 1209 / 1409 / 1609 / 1809

Kitchen	10'0" x 8'9"	305.0 cm x 266.0 cm
Living/Dining	18'8" (9'2") x 14'9" (9'0")	568.0 cm (285.0) x 454.0 cm (274.0)
Master Bedroom	14'7" x 10'1"	450.5 cm x 316.0 cm
Balcony	7'0" x 6'4"	213.0 cm x 194.0 cm
Balcony 2	7'10" x 2'0"	239.0 cm x 61.0 cm
Total internal area	600 sq ft	55.7 sq m
Total external area	60 sq ft	5.6 sq m

FF = Fridge freezer OM = Separate oven and microwave

DISCLAIMER
There are minor variations to the total size shown for this apartment type based on floor level, please refer to the individual floorplan as provided by your sales team member. Floorplans shown are approximate measurements only, are not to scale and exact layout may vary. Furniture is for visual reference only and not included in the purchase price.





TYPE 2 ONE BEDROOM APARTMENT

598 sq ft | 55.6 sq m

APARTMENTS

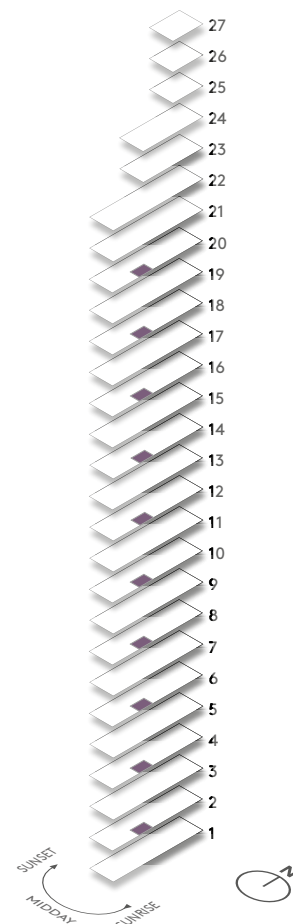
205 / 405 / 605 / 805 / 1005 / 1205 / 1405 / 1605 / 1805 / 2005

Kitchen	10'0" x 7'4"	305.0 cm x 227.0 cm
Living/Dining	18'8" (8'8") x 17'4" (8'11")	568.0 cm (264.5) x 531.3 cm (273.0)
Master Bedroom	14'7" x 10'4"	450.0 cm x 316.0 cm
Balcony	7'10" x 6'4"	239.0 cm x 194.0 cm
Balcony 2	7'0" x 2'0"	213.0 cm x 61.0 cm
Total internal area	598 sq ft	55.6 sq m
Total external area	64 sq ft	5.9 sq m

FF = Fridge freezer OM = Separate oven and microwave

DISCLAIMER

There are minor variations to the total size shown for this apartment type based on floor level, please refer to the individual floorplan as provided by your sales team member. Floorplans shown are approximate measurements only, are not to scale and exact layout may vary. Furniture is for visual reference only and not included in the purchase price.



TYPE 2A ONE BEDROOM APARTMENT

601 sq ft | 55.8 sq m

APARTMENTS

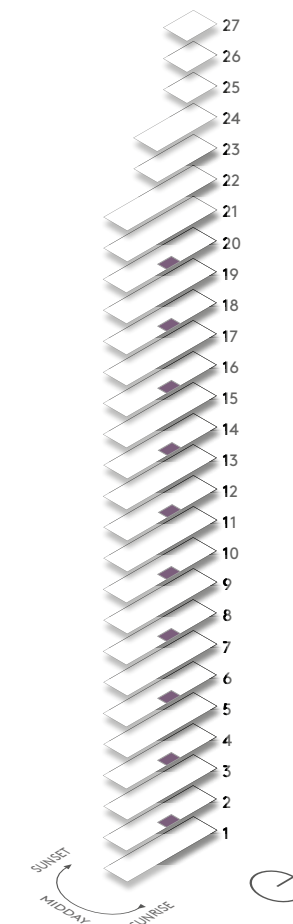
204 / 404 / 604 / 804 / 1004 / 1204 / 1404 / 1604 / 1804 / 2004

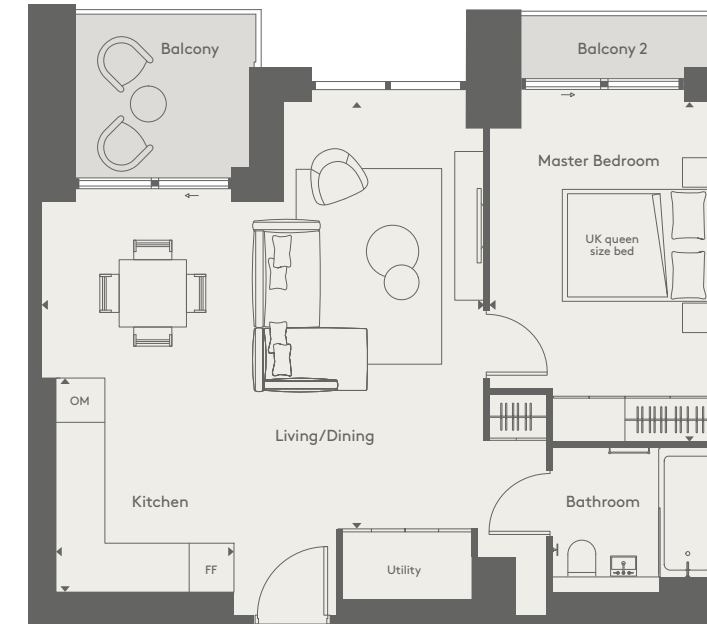
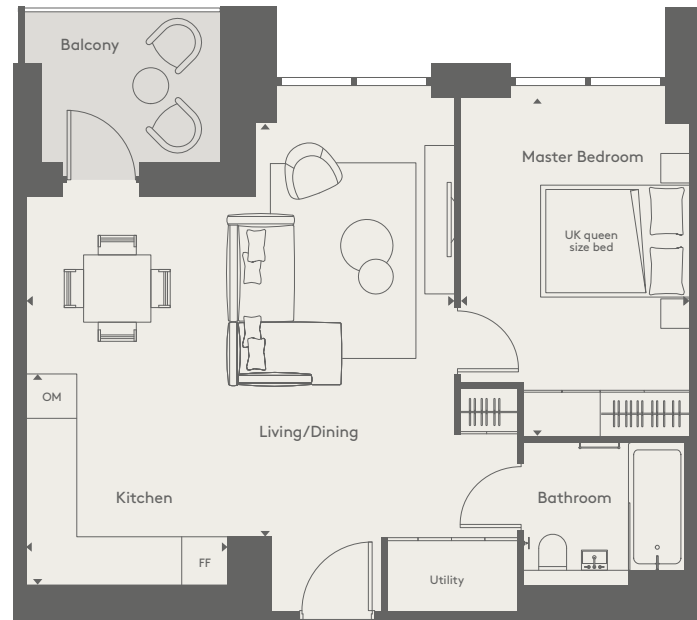
Kitchen	10'0" x 7'9"	305.0 cm x 237.0 cm
Living/Dining	19'3" (9'2") x 19'3" (9'0")	586.0 cm (274.5) x 586.4 cm (274.0)
Master Bedroom	14'7" x 9'1"	450.5 cm x 297.5 cm
Balcony	7'10" x 6'4"	239.0 cm x 194.0 cm
Total internal area	601 sq ft	55.8 sq m
Total external area	50 sq ft	4.6 sq m

FF = Fridge freezer OM = Separate oven and microwave

DISCLAIMER

There are minor variations to the total size shown for this apartment type based on floor level, please refer to the individual floorplan as provided by your sales team member. Floorplans shown are approximate measurements only, are not to scale and exact layout may vary. Furniture is for visual reference only and not included in the purchase price.





TYPE 2B ONE BEDROOM APARTMENT

596 sq ft | 55.4 sq m

APARTMENTS

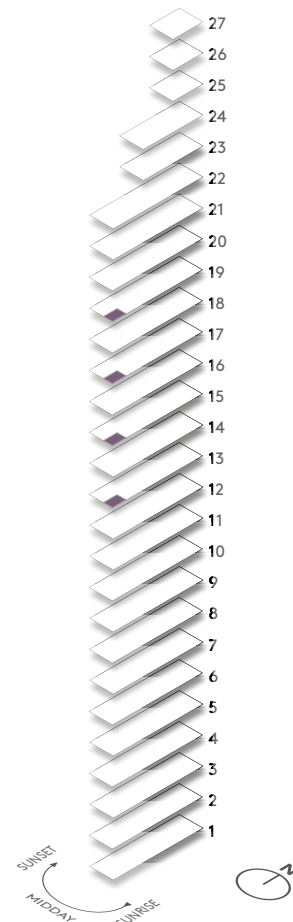
1307/1507/1707/1907

Kitchen	10'0" x 8'9"	305.0 cm x 266.0 cm
Living/Dining	18'8" (9'2") x 19'3" (9'0")	568.0 cm (264.5) x 586.4 cm (273.0)
Master Bedroom	14'7" x 9'1"	450.5 cm x 307.0 cm
Balcony	7'10" x 6'4"	239.0 cm x 194.0 cm
Total internal area	596 sq ft	55.4 sq m
Total external area	50 sq ft	4.6 sq m

FF = Fridge freezer OM = Separate oven and microwave

DISCLAIMER

There are minor variations to the total size shown for this apartment type based on floor level, please refer to the individual floorplan as provided by your sales team member. Floorplans shown are approximate measurements only, are not to scale and exact layout may vary. Furniture is for visual reference only and not included in the purchase price.



TYPE 2C + 2I ONE BEDROOM APARTMENT

598 sq ft | 55.6 sq m

APARTMENTS

105/306/506/706/906/1106

1306*/1506*/1706*/1906*

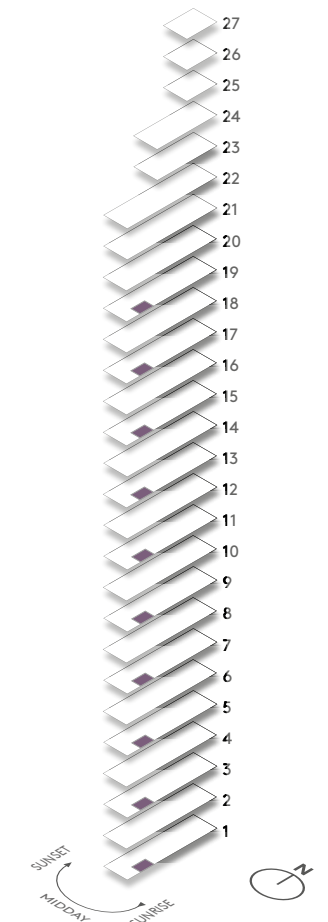
Kitchen	10'0" x 7'10"	305.0 cm x 237.5 cm
Living/Dining	19'3" (8'9") x 18'7" (13'3")	586.0 cm (265.5) x 566.4 cm (273.0)
Master Bedroom	14'7" x 9'8"	450.5 cm x 297.0 cm
Balcony	7'7" x 6'4"	230.0 cm x 194.0 cm
Balcony 2	8'8" x 2'0"	265.0 cm x 61.0 cm
Total internal area	598 sq ft	55.6 sq m
Total external area	66 sq ft	6.1 sq m

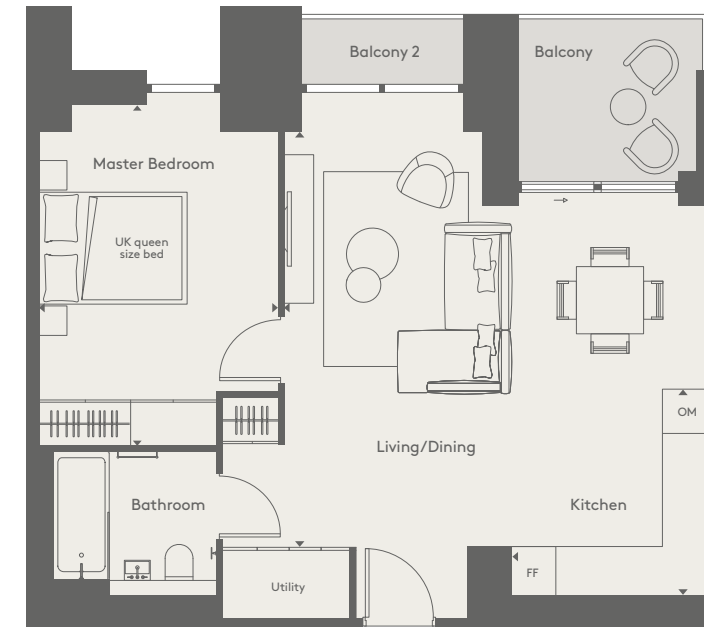
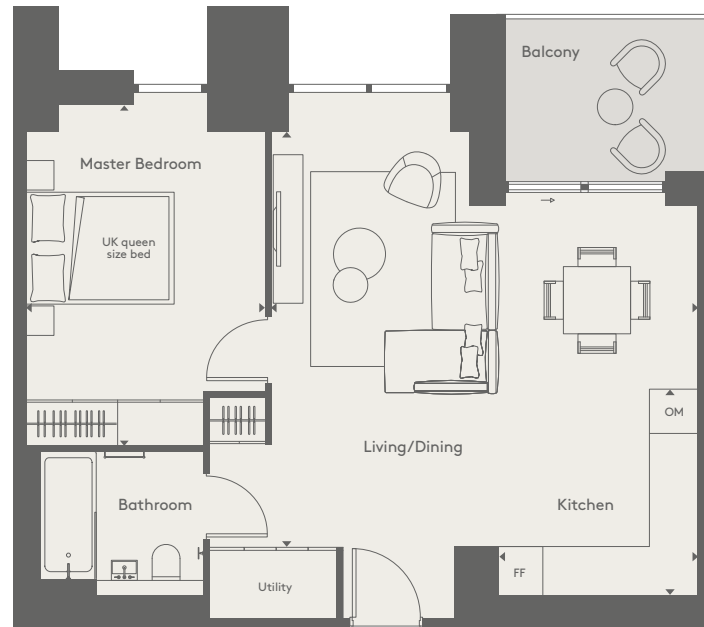
* Type 2I apartments have a variation to the access to balcony 2, with a door instead of the sliding door as shown above

FF = Fridge freezer OM = Separate oven and microwave

DISCLAIMER

There are minor variations to the total size shown for this apartment type based on floor level, please refer to the individual floorplan as provided by your sales team member. Floorplans shown are approximate measurements only, are not to scale and exact layout may vary. Furniture is for visual reference only and not included in the purchase price.





TYPE 2D ONE BEDROOM APARTMENT

598 sq ft | 55.6 sq m

APARTMENTS

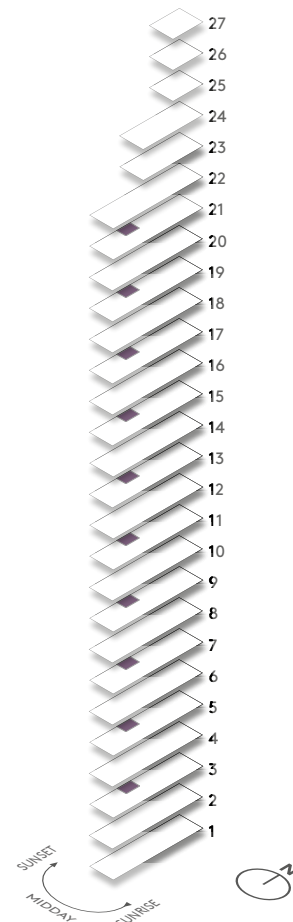
309 / 509 / 709 / 909 / 1109 / 1309 / 1509 / 1709 / 1909 / 2108

Kitchen	10'0" x 8'9"	305.0 cm x 266.0 cm
Living/Dining	18'8" (92") x 18'1" (811")	568.0 cm (264.5) x 551.5 cm (273.0)
Master Bedroom	14'7" x 10'4"	450.2 cm x 315.5 cm
Balcony	8'8" x 6'4"	265.0 cm x 194.0 cm
Total internal area	598 sq ft	55.6 sq m
Total external area	55 sq ft	5.1 sq m

FF = Fridge freezer OM = Separate oven and microwave

DISCLAIMER

There are minor variations to the total size shown for this apartment type based on floor level, please refer to the individual floorplan as provided by your sales team member. Floorplans shown are approximate measurements only, are not to scale and exact layout may vary. Furniture is for visual reference only and not included in the purchase price.



TYPE 2E ONE BEDROOM APARTMENT

598 sq ft | 55.6 sq m

APARTMENT

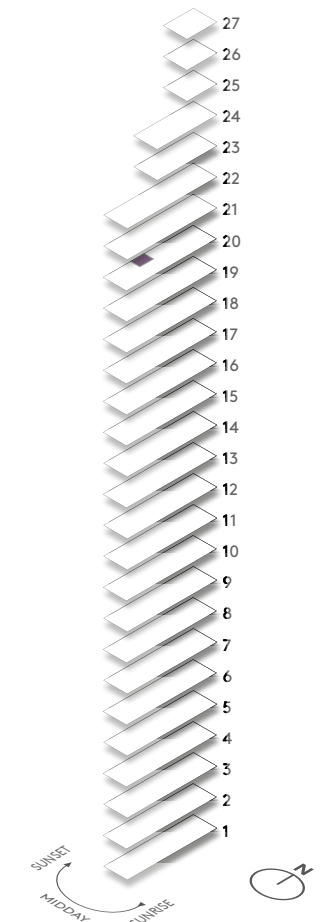
2009

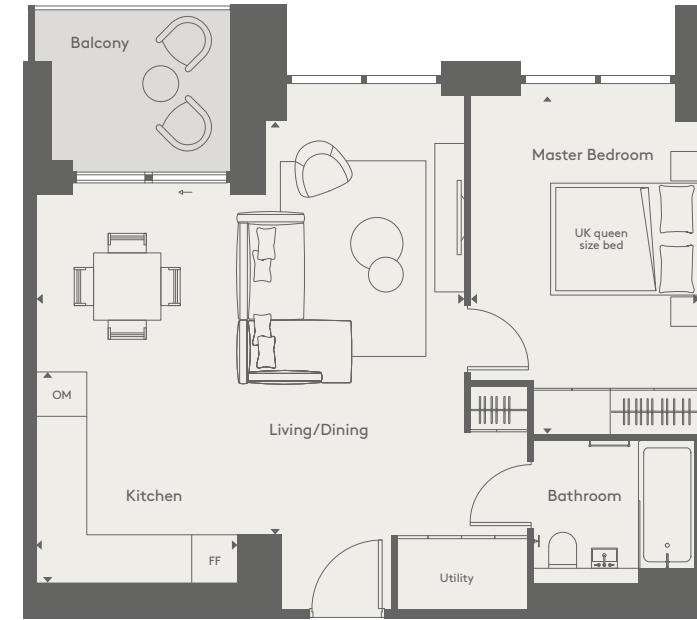
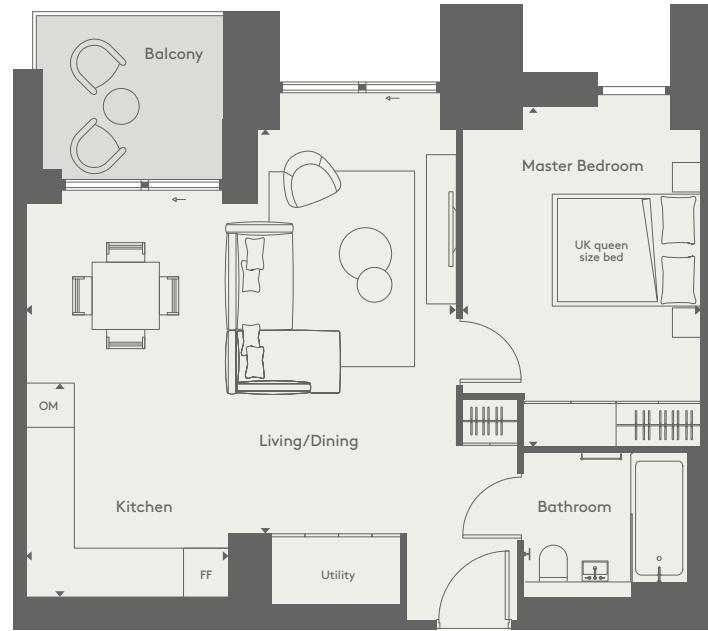
Kitchen	10'0" x 8'9"	305.0 cm x 266.0 cm
Living/Dining	18'8" (92") x 18'1" (811")	568.0 cm (264.5) x 551.5 cm (273.0)
Master Bedroom	14'7" x 10'4"	450.2 cm x 315.5 cm
Balcony	7'10" x 6'4"	239.0 cm x 194.0 cm
Balcony 2	7'0" x 2'0"	213.0 cm x 61.0 cm
Total internal area	598 sq ft	55.6 sq m
Total external area	65 sq ft	6.0 sq m

FF = Fridge freezer OM = Separate oven and microwave

DISCLAIMER

There are minor variations to the total size shown for this apartment type based on floor level, please refer to the individual floorplan as provided by your sales team member. Floorplans shown are approximate measurements only, are not to scale and exact layout may vary. Furniture is for visual reference only and not included in the purchase price.





TYPE 2F ONE BEDROOM APARTMENT

598 sq ft | 55.6 sq m

APARTMENTS

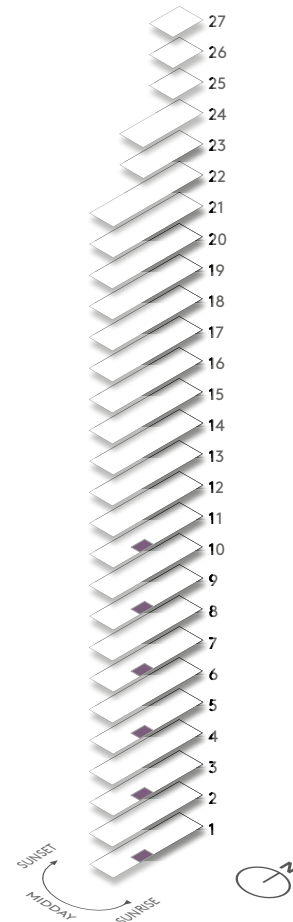
104/305/505/705/905/1105

Kitchen	10'0" x 8'9"	305.0 cm x 266.0 cm
Living/Dining	18'8" (8'8") x 18'1" (8'11")	568.0 cm (264.5) x 551.5 cm (273.0)
Master Bedroom	14'7" x 10'4"	450.2 cm x 316.0 cm
Balcony	7'10" x 6'4"	239.0 cm x 194.0 cm
Total internal area	598 sq ft	55.6 sq m
Total external area	50 sq ft	4.6 sq m

FF = Fridge freezer OM = Separate oven and microwave

DISCLAIMER

There are minor variations to the total size shown for this apartment type based on floor level, please refer to the individual floorplan as provided by your sales team member. Floorplans shown are approximate measurements only, are not to scale and exact layout may vary. Furniture is for visual reference only and not included in the purchase price.



TYPE 2G ONE BEDROOM APARTMENT

596 sq ft | 55.4 sq m

APARTMENTS

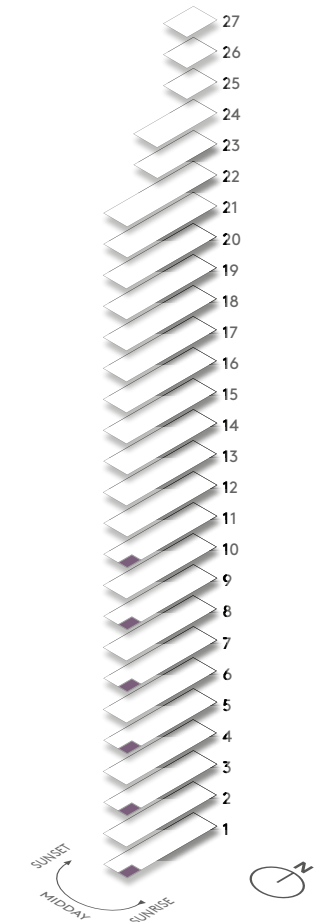
106/307/507/707/907/1107

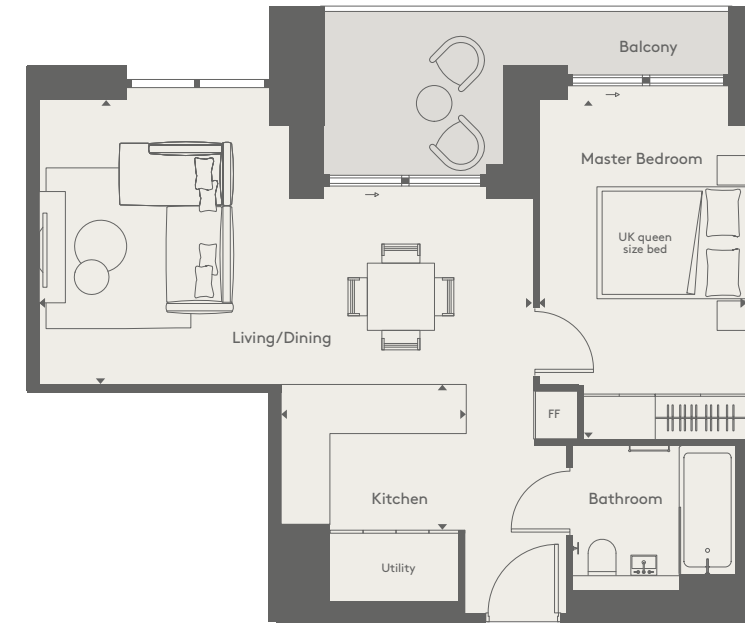
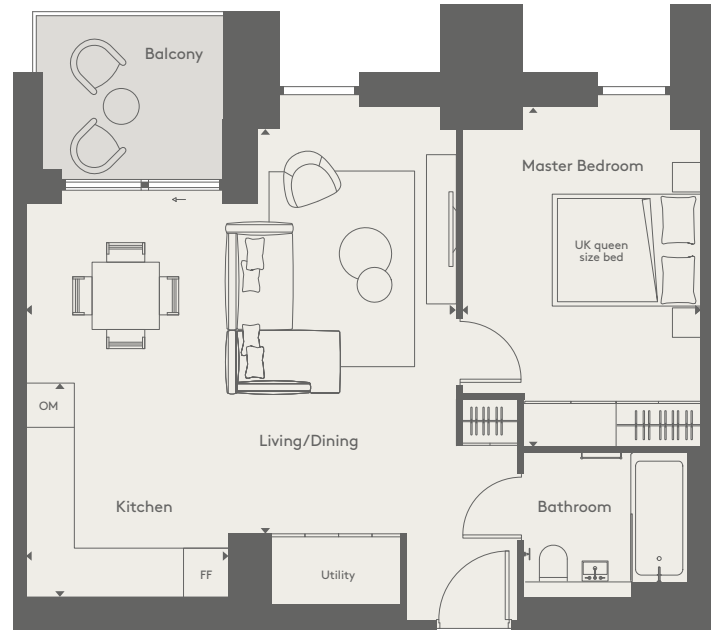
Kitchen	10'0" x 8'9"	305.0 cm x 266.0 cm
Living/Dining	18'8" (9'2") x 19'3" (9'0")	568.0 cm (264.5) x 586.5 cm (273.0)
Master Bedroom	14'7" x 9'1"	450.5 cm x 307.0 cm
Balcony	7'10" x 6'4"	239.0 cm x 194.0 cm
Total internal area	596 sq ft	55.4 sq m
Total external area	52 sq ft	4.8 sq m

FF = Fridge freezer OM = Separate oven and microwave

DISCLAIMER

There are minor variations to the total size shown for this apartment type based on floor level, please refer to the individual floorplan as provided by your sales team member. Floorplans shown are approximate measurements only, are not to scale and exact layout may vary. Furniture is for visual reference only and not included in the purchase price.





TYPE 2H ONE BEDROOM APARTMENT

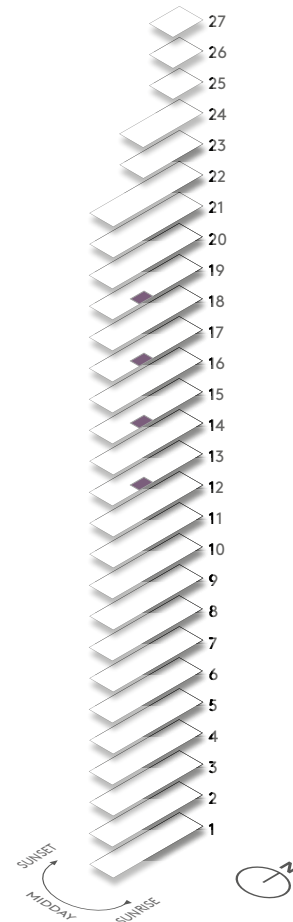
598 sq ft | 55.6 sq m

APARTMENTS
1305/1505/1705/1905

Kitchen	10'0" x 8'9"	305.0 cm x 266.0 cm
Living/Dining	18'8" (8'8") x 18'1" (8'11")	568.0 cm (264.5) x 551.5 cm (273.0)
Master Bedroom	14'7" x 10'4"	450.2 cm x 316.0 cm
Balcony	7'10" x 6'4"	239.0 cm x 194.0 cm
Total internal area	598 sq ft	55.6 sq m
Total external area	50 sq ft	4.6 sq m

FF = Fridge freezer OM = Separate oven and microwave

DISCLAIMER
There are minor variations to the total size shown for this apartment type based on floor level, please refer to the individual floorplan as provided by your sales team member. Floorplans shown are approximate measurements only, are not to scale and exact layout may vary. Furniture is for visual reference only and not included in the purchase price.



TYPE 3 ONE BEDROOM APARTMENT

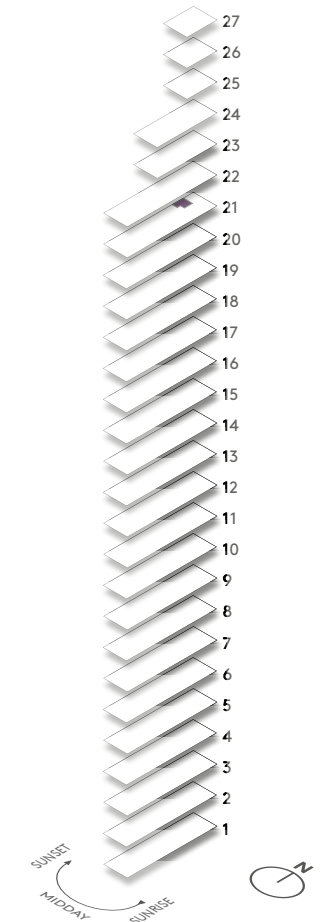
522 sq ft | 48.5 sq m

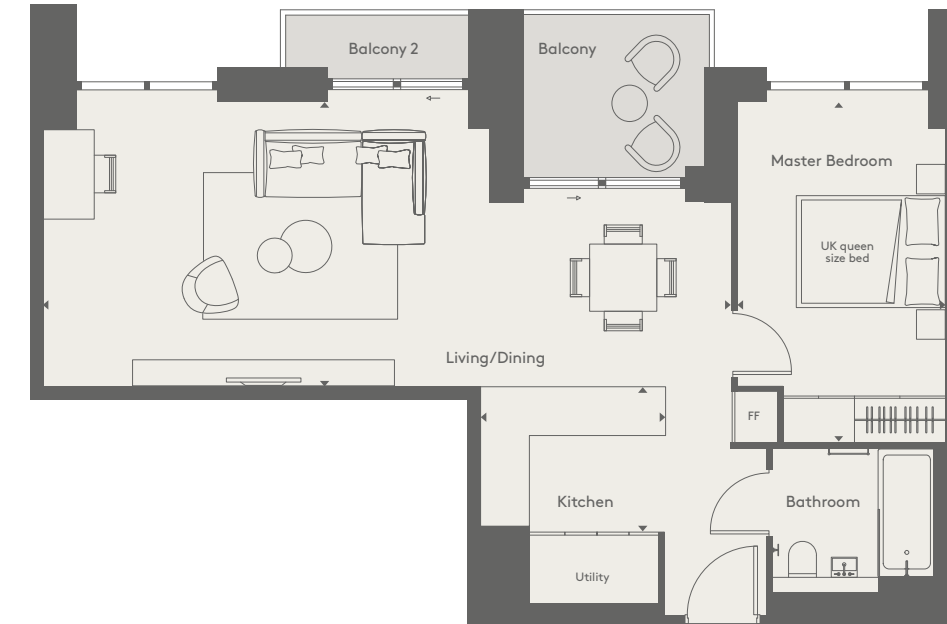
APARTMENT
2101

Kitchen	8'0" x 6'4"	245.0 cm x 192.5 cm
Living/Dining	21'4" (9'11") x 12'5" (8'0")	649.5 cm (302.0) x 377.5 cm (245.0)
Master Bedroom	14'7" x 9'0"	450.0 cm x 274.5 cm
Balcony	7'10" x 6'4"	239.0 cm x 194.0 cm
	+ 9'9" x 2'0"	+ 296.0 cm x 61.0 cm
Total internal area	522 sq ft	48.5 sq m
Total external area	70 sq ft	6.5 sq m

FF = Fridge freezer
Combination oven and microwave located beneath hob

DISCLAIMER
There are minor variations to the total size shown for this apartment type based on floor level, please refer to the individual floorplan as provided by your sales team member. Floorplans shown are approximate measurements only, are not to scale and exact layout may vary. Furniture is for visual reference only and not included in the purchase price.





TYPE 3A ONE BEDROOM APARTMENT

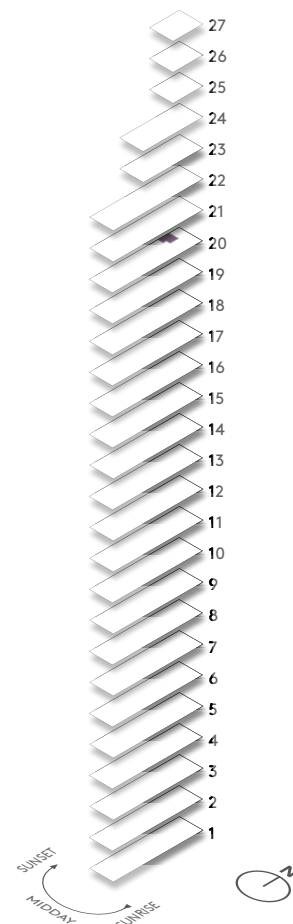
522 sq ft | 48.5 sq m

APARTMENT
2001

Kitchen	8'0" x 6'4"	245.0 cm x 192.5 cm
Living/Dining	21'4" (9'11") x 12'5" (8'0")	649.5 cm (302.0) x 377.5 cm (245.0)
Master Bedroom	14'7" x 9'0"	450.0 cm x 274.5 cm
Balcony	7'10" x 6'4"	239.0 cm x 194.0 cm
Balcony 2	7'7" x 2'0"	230.0 cm x 61.0 cm
Total internal area	522 sq ft	48.5 sq m
Total external area	66 sq ft	6.1 sq m

FF = Fridge freezer
Combination oven and microwave located beneath hob

DISCLAIMER
There are minor variations to the total size shown for this apartment type based on floor level, please refer to the individual floorplan as provided by your sales team member. Floorplans shown are approximate measurements only, are not to scale and exact layout may vary. Furniture is for visual reference only and not included in the purchase price.



TYPE 4 ONE BEDROOM APARTMENT

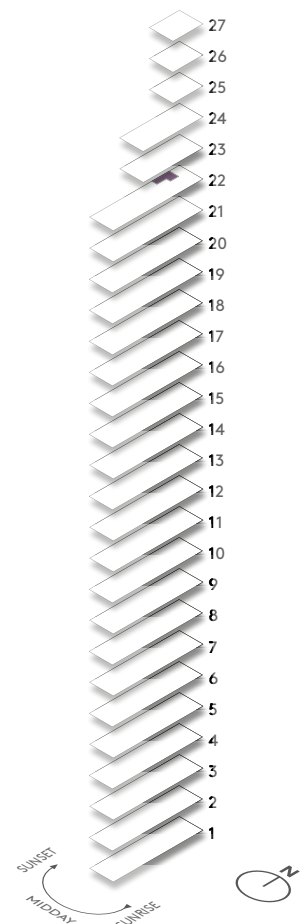
626 sq ft | 58.2 sq m

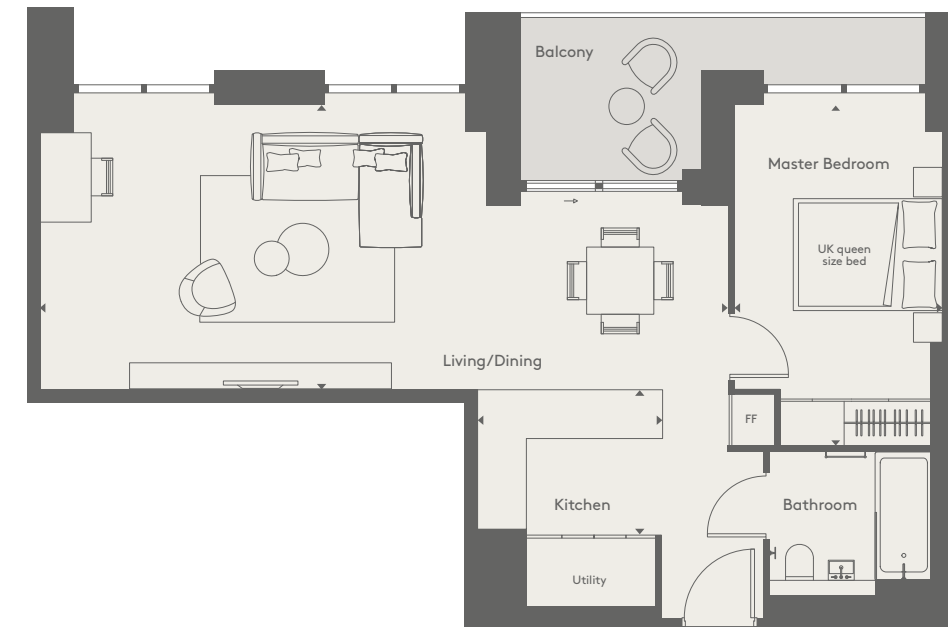
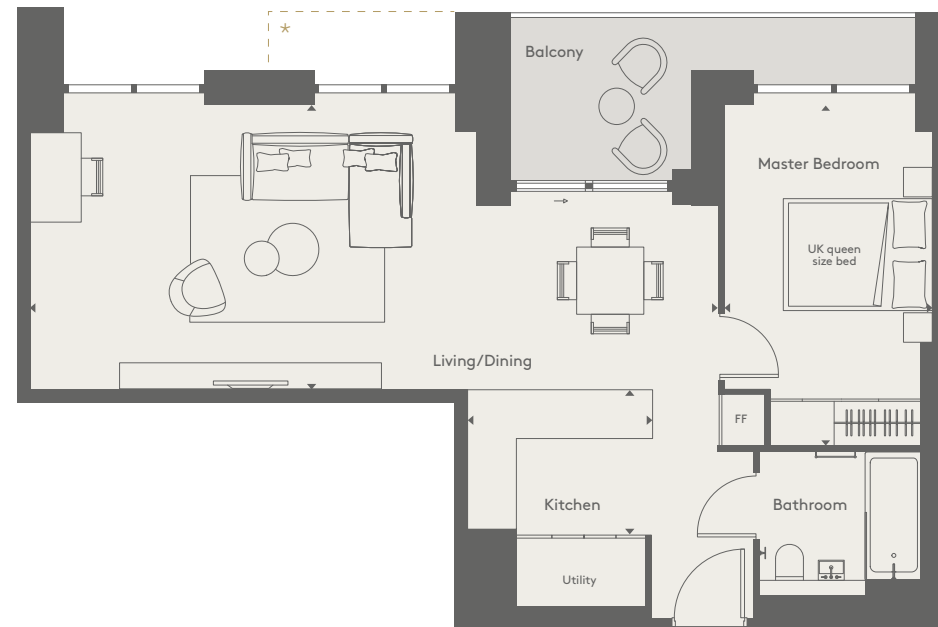
APARTMENT
2201

Kitchen	8'0" x 6'4"	245.0 cm x 192.5 cm
Living/Dining	29'10" (19'9") x 12'4" (8'1")	909.5 cm (602.0) x 377.0 cm (246.5)
Master Bedroom	14'7" x 9'0"	450.5 cm x 274.5 cm
Balcony	7'10" x 6'4"	239.0 cm x 194.0 cm
Balcony 2	7'7" x 2'0"	230.0 cm x 61.0 cm
Total internal area	626 sq ft	58.2 sq m
Total external area	65 sq ft	6.0 sq m

FF = Fridge freezer
Combination oven and microwave located beneath hob

DISCLAIMER
There are minor variations to the total size shown for this apartment type based on floor level, please refer to the individual floorplan as provided by your sales team member. Floorplans shown are approximate measurements only, are not to scale and exact layout may vary. Furniture is for visual reference only and not included in the purchase price.





TYPE 4A + 4B* ONE BEDROOM APARTMENT

621 sq ft | 57.7 sq m

APARTMENTS

2301

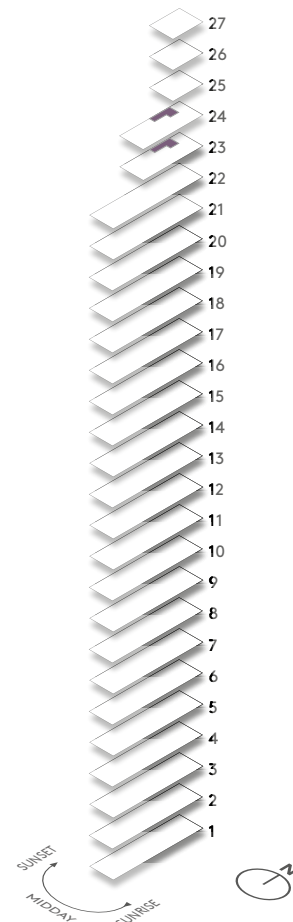
2401*

Kitchen	8'0" x 6'4"	245.0 cm x 192.5 cm
Living/Dining	29'6" (19'5") x 12'5" (8'1")	899.5 cm (591.0) x 377.5 cm (246.5)
Master Bedroom	14'7" x 9'0"	449.5 cm x 273.5 cm
Balcony	7'10" x 6'4" + 9'9" x 2'0"	239.0 cm x 194.0 cm + 296.0 cm x 61.0 cm
Total internal area	621 sq ft	57.7 sq m
Total external area	70 sq ft	6.5 sq m

* Apartment 2401 is a Type 4B and has a second balcony (as outlined above), and a total external area of 85 sq ft | 7.9 sq m

FF = Fridge freezer
Combination oven and microwave located beneath hob

DISCLAIMER
There are minor variations to the total size shown for this apartment type based on floor level, please refer to the individual floorplan as provided by your sales team member. Floorplans shown are approximate measurements only, are not to scale and exact layout may vary. Furniture is for visual reference only and not included in the purchase price.



TYPE 4C ONE BEDROOM APARTMENT

629 sq ft | 58.4 sq m

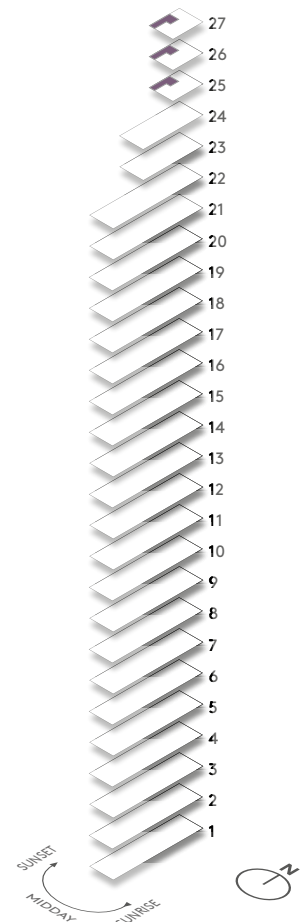
APARTMENTS

2501/2601/2701

Kitchen	8'0" x 6'4"	245.0 cm x 192.5 cm
Living/Dining	29'6" (19'5") x 12'5" (8'1")	899.5 cm (591.0) x 377.5 cm (246.5)
Master Bedroom	14'7" x 9'0"	449.5 cm x 273.5 cm
Balcony	7'10" x 6'4" + 9'9" x 2'0"	239.0 cm x 194.0 cm + 296.0 cm x 61.0 cm
Total internal area	629 sq ft	58.4 sq m
Total external area	68 sq ft	6.3 sq m

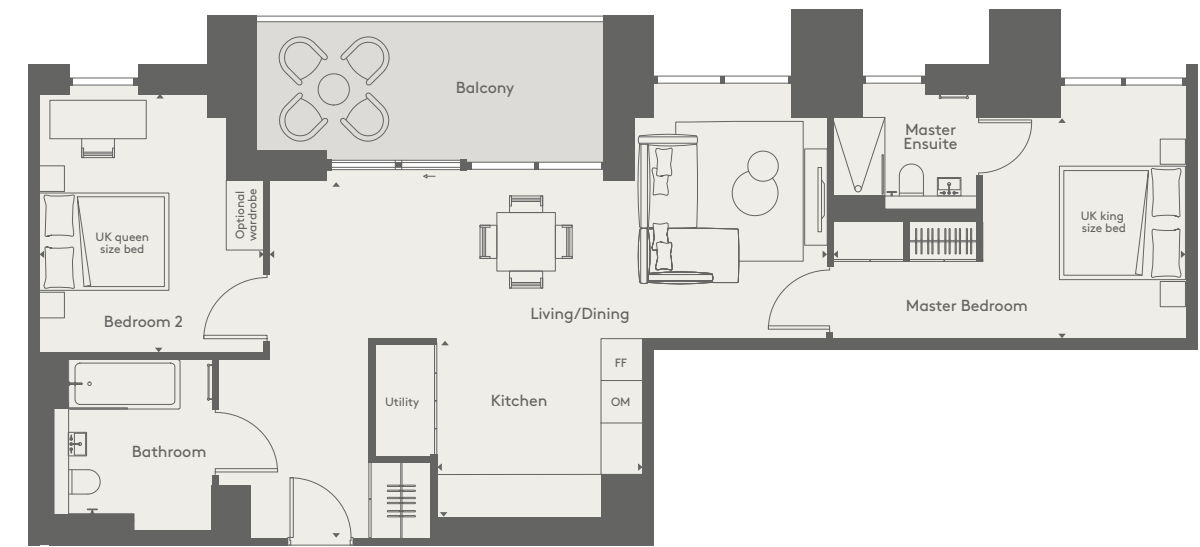
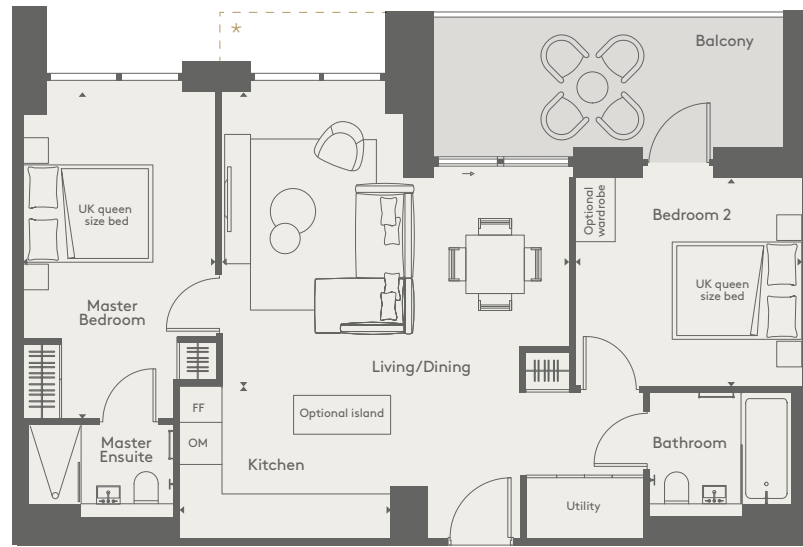
FF = Fridge freezer
Combination oven and microwave located beneath hob

DISCLAIMER
There are minor variations to the total size shown for this apartment type based on floor level, please refer to the individual floorplan as provided by your sales team member. Floorplans shown are approximate measurements only, are not to scale and exact layout may vary. Furniture is for visual reference only and not included in the purchase price.





TWO BEDROOM APARTMENTS



TYPE 1* + 1F + 1I** TWO BEDROOM APARTMENT

776 sq ft | 72.0 sq m

APARTMENTS

1302/1502/1702/1902/
308*/408*/508*/608*/708*/808*/908*/1008*/1108*/
1208*/1308*/1408*/1508*/1708*/1908*/2107*
2102**

Kitchen	10'7" x 7'7"	322.0 cm x 230.0 cm
Living/Dining	14'7" (8'2") x 17'5" (10'5")	450.0 cm (249.0) x 530.0 cm (317.5)
Master Bedroom	16'5" x 9'8"	500.5 cm x 295.0 cm
Bedroom 2	11'4" x 10'5"	345.0 cm x 317.5 cm
Balcony	17'0" x 6'4"	518.0 cm x 194.0 cm
Total internal area	776 sq ft	72.0 sq m
Total external area	112 sq ft	10.4 sq m

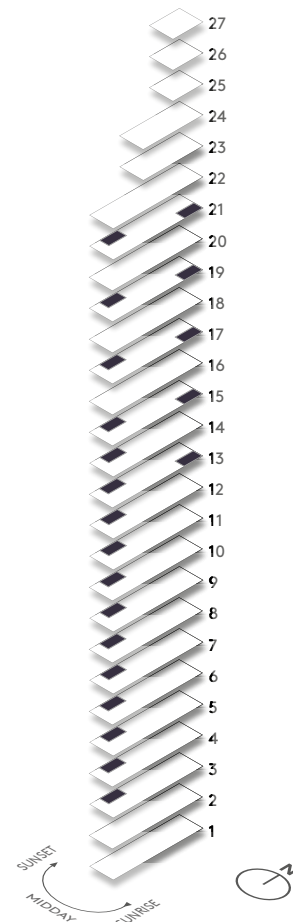
* Type 1 apartments have a second balcony (as outlined above),
and a total external area of 124 sq ft | 11.5 sq m

** Type 1I apartment has a single window to Living/Dining area

FF = Fridge freezer OM = Separate oven and microwave
Optional island and wardrobe are not included as standard, available as an upgrade.

DISCLAIMER

There are minor variations to the total size shown for this apartment type based on floor level, please refer to the individual floorplan as provided by your sales team member. Floorplans shown are approximate measurements only, are not to scale and exact layout may vary. Furniture is for visual reference only and not included in the purchase price.



TYPE 1 (ACCESSIBLE) TWO BEDROOM APARTMENT

904 sq ft | 84.0 sq m

APARTMENTS

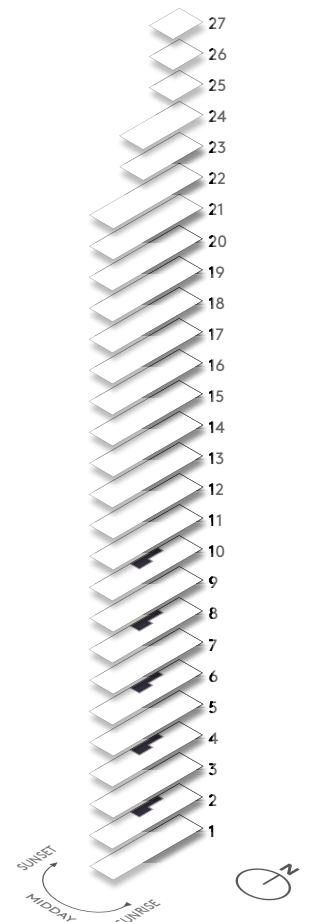
210/410/610/810/1010

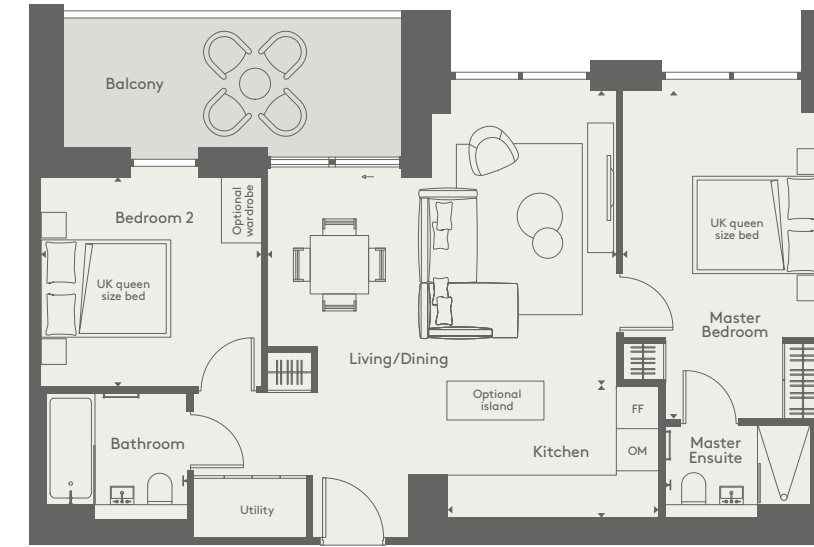
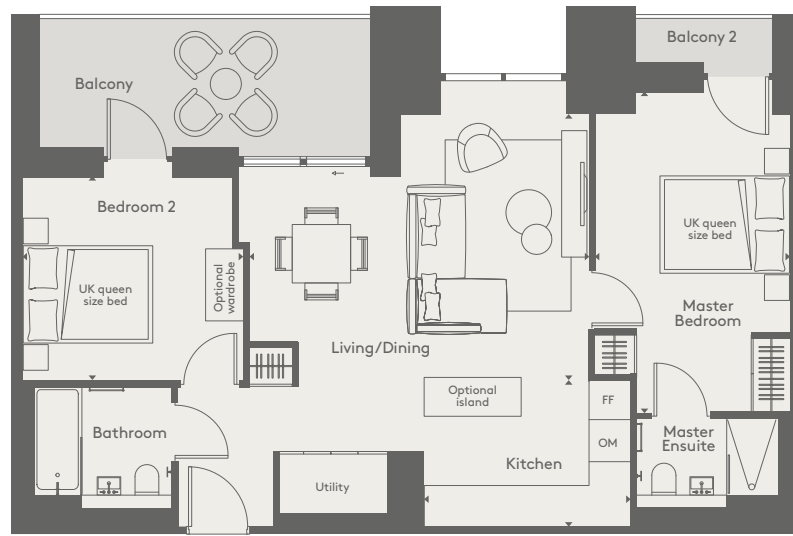
Kitchen	10'4" x 11'3"	315.0 cm x 273.0 cm
Living/Dining	28'0" (9'8") x 17'9" (8'0")	854.5 cm (295.0) x 547.7 cm (245.0)
Master Bedroom	17'6" x 11'2"	533.5 cm x 342.3 cm
Bedroom 2	13'2" x 11'3"	400.5 cm x 343.5 cm
Balcony	17'7" x 6'4"	535.5 cm x 194.0 cm
Total internal area	904 sq ft	84.0 sq m
Total external area	112 sq ft	10.4 sq m

FF = Fridge freezer OM = Separate oven and microwave
Optional wardrobe is not included as standard, available as an upgrade.

DISCLAIMER

There are minor variations to the total size shown for this apartment type based on floor level, please refer to the individual floorplan as provided by your sales team member. Floorplans shown are approximate measurements only, are not to scale and exact layout may vary. Furniture is for visual reference only and not included in the purchase price.





TYPE 1A TWO BEDROOM APARTMENT

778 sq ft | 72.3 sq m

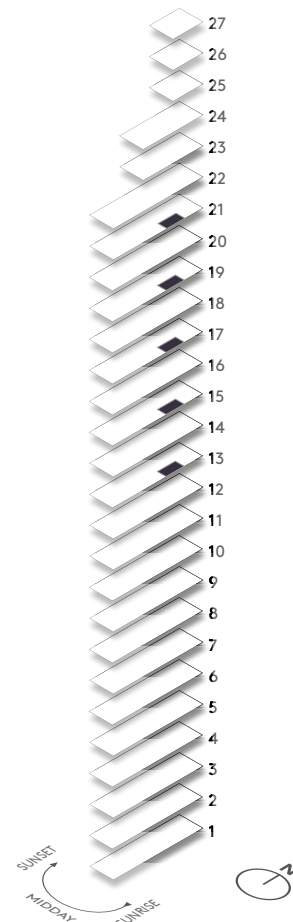
APARTMENTS

1303/1503/1703/1903/2103

Kitchen	10'7" x 7'7"	322.5 cm x 230.0 cm
Living/Dining	17'5" (98") x 13'8" (105")	530.0 cm (294.0) x 415.5 cm (317.5)
Master Bedroom	16'5" x 9'9"	500.5 cm x 303.3 cm
Bedroom 2	11'3" x 10'4"	345.2 cm x 317.8 cm
Balcony	17'0" x 6'4"	518.0 cm x 194.0 cm
Balcony 2	7'0" x 2'0"	213.0 cm x 61.0 cm
Total internal area	778 sq ft	72.3 sq m
Total external area	122 sq ft	11.3 sq m

FF = Fridge freezer OM = Separate oven and microwave
Optional island and wardrobe are not included as standard, available as an upgrade.

DISCLAIMER
There are minor variations to the total size shown for this apartment type based on floor level, please refer to the individual floorplan as provided by your sales team member. Floorplans shown are approximate measurements only, are not to scale and exact layout may vary. Furniture is for visual reference only and not included in the purchase price.



TYPE 1B TWO BEDROOM APARTMENT

777 sq ft | 72.2 sq m

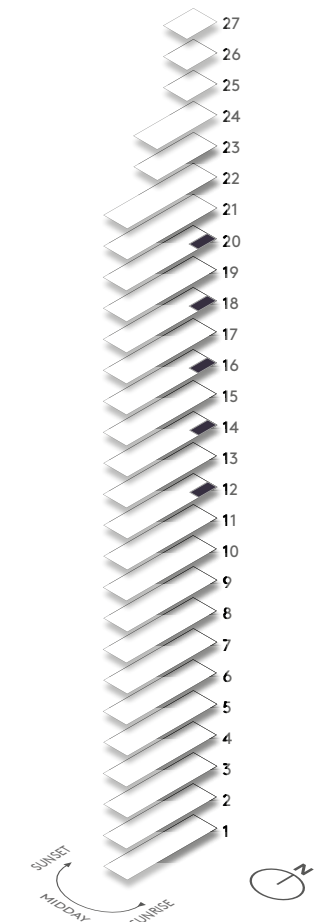
APARTMENTS

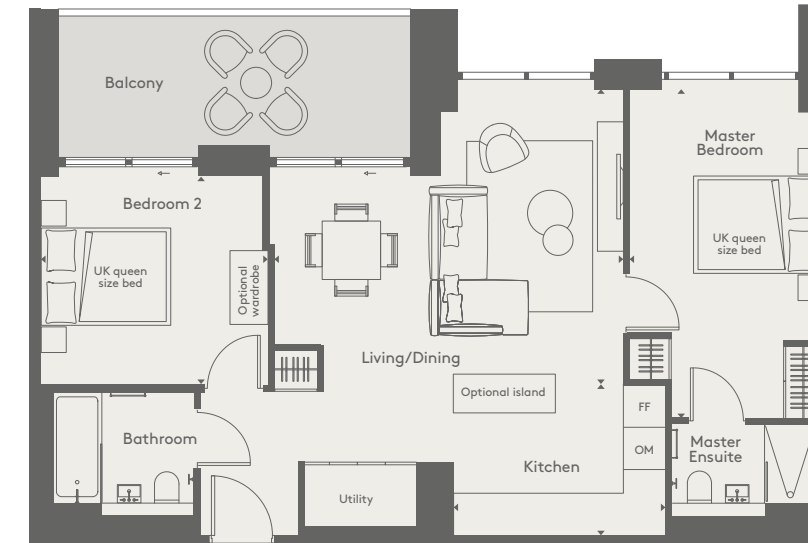
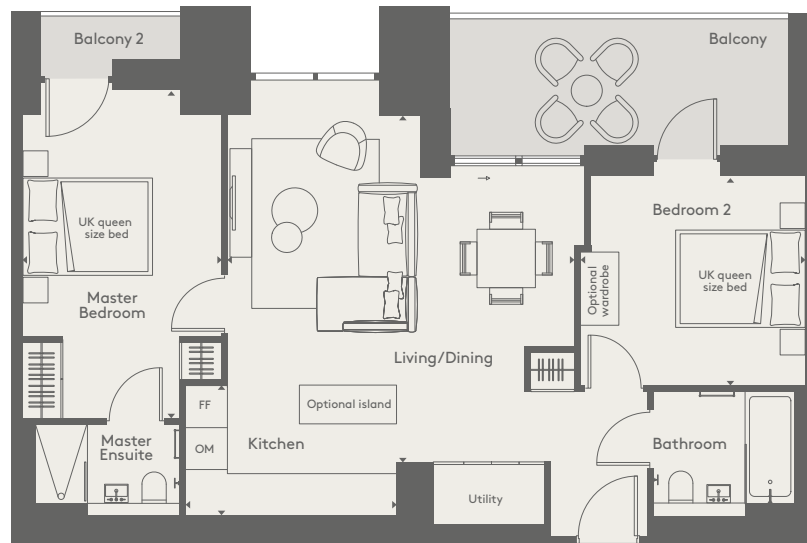
1202/1402/1602/1802/2002

Kitchen	10'7" x 6'7"	323.0 cm x 200.0 cm
Living/Dining	17'5" (82") x 14'7" (105")	530.0 cm (249.5) x 450.5 cm (317.5)
Master Bedroom	16'5" x 9'11"	500.5 cm x 303.0 cm
Bedroom 2	11'0" x 10'5"	336.0 cm x 317.5 cm
Balcony	17'0" x 6'4"	518.0 cm x 194.0 cm
Total internal area	777 sq ft	72.2 sq m
Total external area	108 sq ft	10.0 sq m

FF = Fridge freezer OM = Separate oven and microwave
Optional island and wardrobe are not included as standard, available as an upgrade.

DISCLAIMER
There are minor variations to the total size shown for this apartment type based on floor level, please refer to the individual floorplan as provided by your sales team member. Floorplans shown are approximate measurements only, are not to scale and exact layout may vary. Furniture is for visual reference only and not included in the purchase price.





TYPE 1C TWO BEDROOM APARTMENT

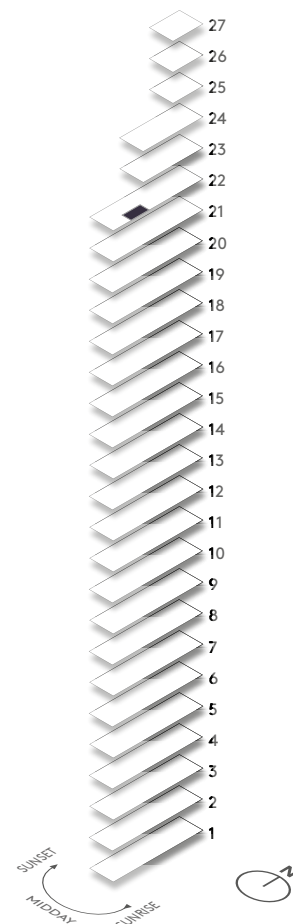
778 sq ft | 72.3 sq m

APARTMENT
2205

Kitchen	10'7" x 6'7"	322.5 cm x 200.0 cm
Living/Dining	17'5" (98") x 17'4" (105")	530.0 cm (294.0) x 531.5 cm (317.5)
Master Bedroom	16'4" x 9'11"	500.4 cm x 303.0 cm
Bedroom 2	11'4" x 10'5"	345.0 cm x 317.5 cm
Balcony	17'0" x 6'4"	518.0 cm x 194.0 cm
Balcony 2	7'0" x 2'0"	213.0 cm x 61.0 cm
Total internal area	778 sq ft	72.3 sq m
Total external area	122 sq ft	11.3 sq m

FF = Fridge freezer OM = Separate oven and microwave
Optional island and wardrobe are not included as standard, available as an upgrade.

DISCLAIMER
There are minor variations to the total size shown for this apartment type based on floor level, please refer to the individual floorplan as provided by your sales team member. Floorplans shown are approximate measurements only, are not to scale and exact layout may vary. Furniture is for visual reference only and not included in the purchase price.



TYPE 1D TWO BEDROOM APARTMENT

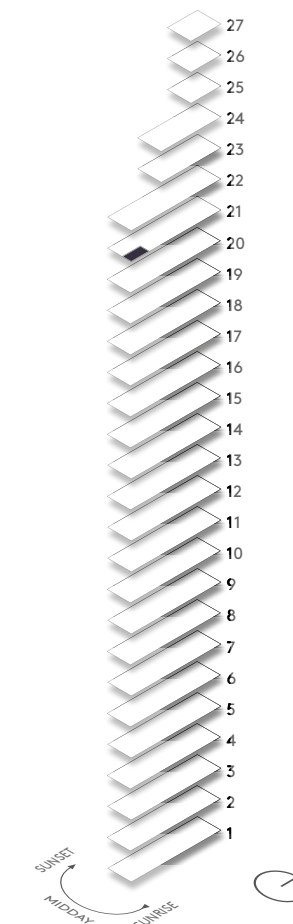
775 sq ft | 72.0 sq m

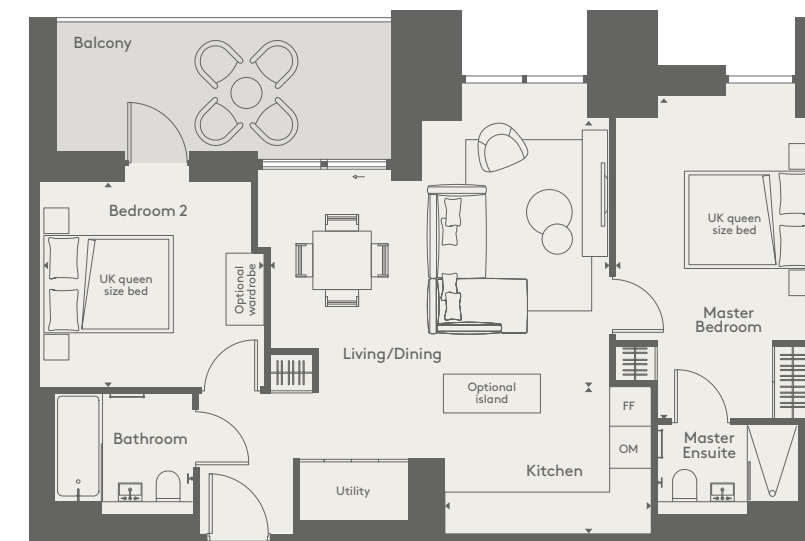
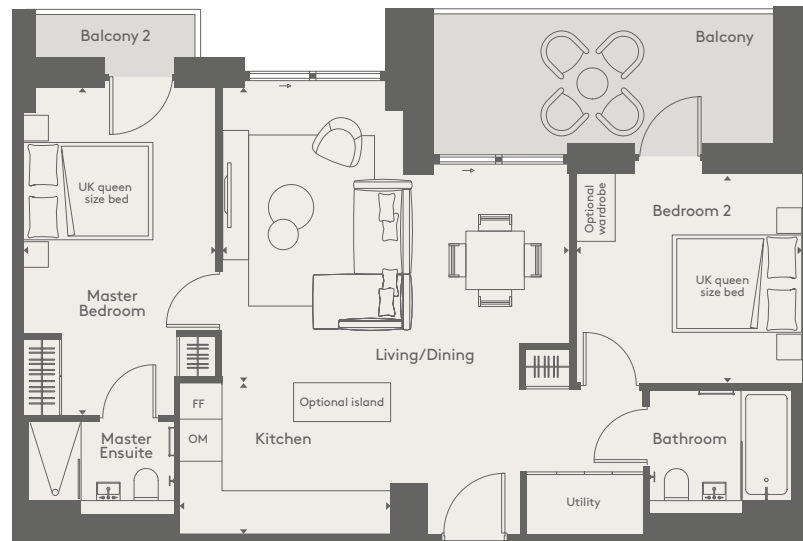
APARTMENT
2106

Kitchen	10'7" x 7'7"	322.5 cm x 230.0 cm
Living/Dining	17'5" (82) x 14'7" (105)	530.0 cm (249.0) x 450.5 cm (317.5)
Master Bedroom	16'4" x 9'8"	500.3 cm x 294.0 cm
Bedroom 2	11'4" x 10'5"	345.0 cm x 318.0 cm
Balcony	17'7" x 6'4"	535.5 cm x 194.0 cm
Total internal area	775 sq ft	72.0 sq m
Total external area	112 sq ft	10.4 sq m

FF = Fridge freezer OM = Separate oven and microwave
Optional island and wardrobe are not included as standard, available as an upgrade.

DISCLAIMER
There are minor variations to the total size shown for this apartment type based on floor level, please refer to the individual floorplan as provided by your sales team member. Floorplans shown are approximate measurements only, are not to scale and exact layout may vary. Furniture is for visual reference only and not included in the purchase price.





TYPE 1E TWO BEDROOM APARTMENT

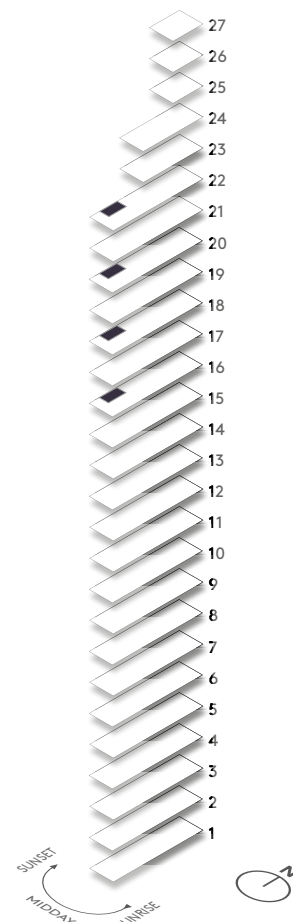
776 sq ft | 72.1 sq m

APARTMENTS
1608/1808/2008/2207

Kitchen	10'7" x 7'7"	322.0 cm x 230.0 cm
Living/Dining	14'7" (8'2") x 17'5" (10'5")	450.0 cm (249.0) x 530.0 cm (317.5)
Master Bedroom	16'5" x 9'8"	500.5 cm x 295.0 cm
Bedroom 2	11'4" x 10'5"	345.0 cm x 317.5 cm
Balcony	17'0" x 6'4"	518.0 cm x 194.0 cm
Balcony 2	8'2" x 2'0"	239.0 cm x 61.0 cm
Total internal area	776 sq ft	72.1 sq m
Total external area	124 sq ft	11.5 sq m

FF = Fridge freezer OM = Separate oven and microwave
Optional island and wardrobe are not included as standard, available as an upgrade.

DISCLAIMER
There are minor variations to the total size shown for this apartment type based on floor level, please refer to the individual floorplan as provided by your sales team member. Floorplans shown are approximate measurements only, are not to scale and exact layout may vary. Furniture is for visual reference only and not included in the purchase price.



TYPE 1G TWO BEDROOM APARTMENT

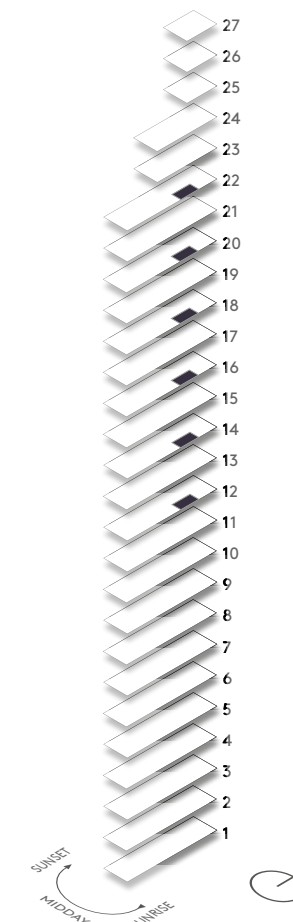
778 sq ft | 72.3 sq m

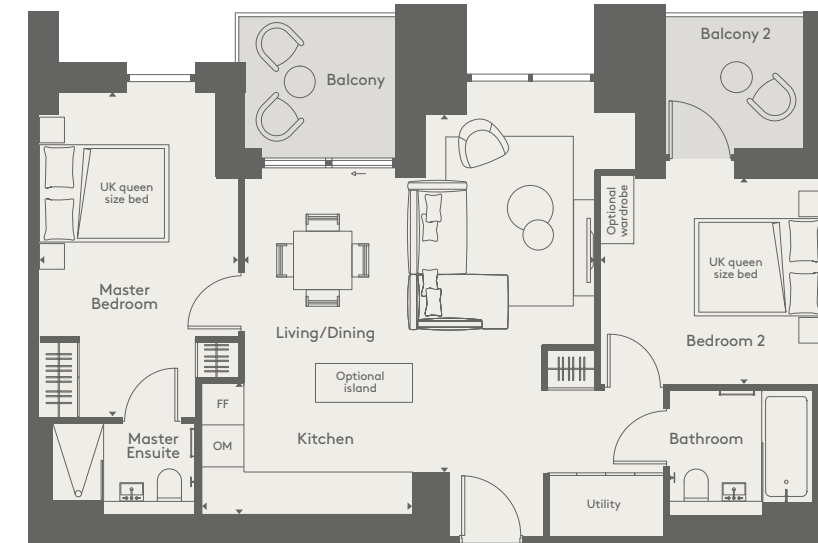
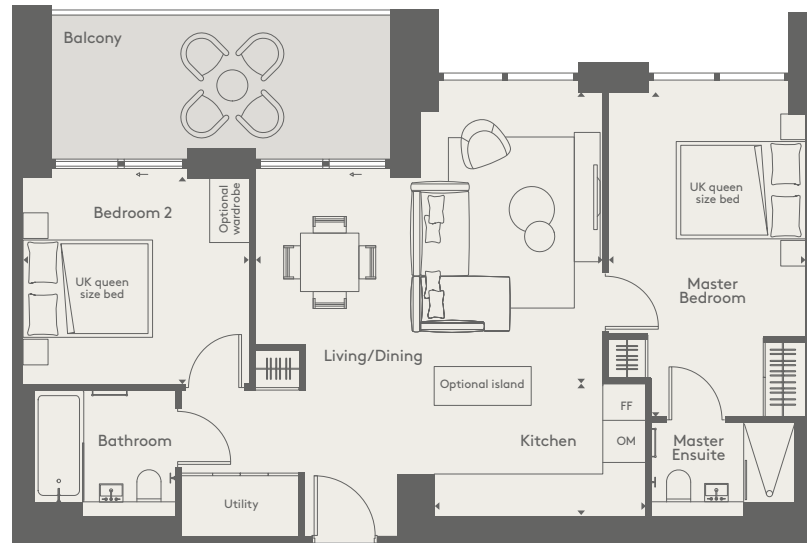
APARTMENTS
1203/1403/1603/1803/2003/2203

Kitchen	10'7" x 7'7"	322.5 cm x 230.0 cm
Living/Dining	17'5" (9'8") x 13'8" (10'5")	530.0 cm (294.0) x 415.5 cm (317.5)
Master Bedroom	16'5" x 9'9"	500.5 cm x 303.3 cm
Bedroom 2	11'3" x 10'4"	345.2 cm x 317.8 cm
Balcony	17'0" x 6'4"	518.0 cm x 194.0 cm
Total internal area	778 sq ft	72.3 sq m
Total external area	108 sq ft	10.0 sq m

FF = Fridge freezer OM = Separate oven and microwave
Optional island and wardrobe are not included as standard, available as an upgrade.

DISCLAIMER
There are minor variations to the total size shown for this apartment type based on floor level, please refer to the individual floorplan as provided by your sales team member. Floorplans shown are approximate measurements only, are not to scale and exact layout may vary. Furniture is for visual reference only and not included in the purchase price.





TYPE 1H + 1J TWO BEDROOM APARTMENT

777 sq ft | 72.2 sq m

APARTMENTS

2202

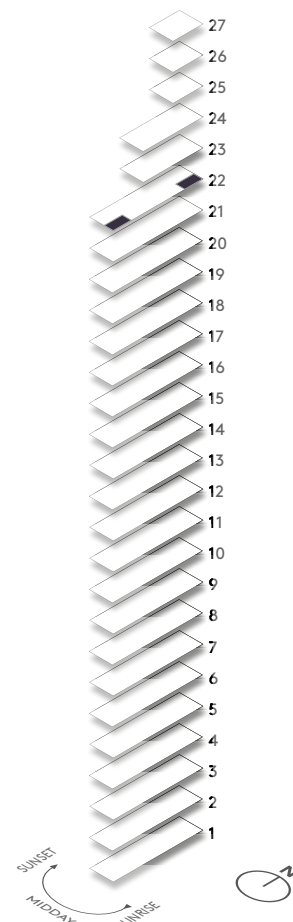
2206*

Kitchen	10'7" x 6'7"	323.0 cm x 200.0 cm
Living/Dining	14'7" (8'2") x 17'5" (10'5")	448.4 cm (249.0) x 530.0 cm (317.5)
Master Bedroom	16'5" x 9'11"	500.5 cm x 303.0 cm
Bedroom 2	11'0" x 10'5"	336.0 cm x 317.5 cm
Balcony	17'0" x 6'4"	518.0 cm x 194.0 cm
Total internal area	777 sq ft	72.2 sq m
Total external area	108 sq ft	10.0 sq m

* Apartment 2206 is handed

FF = Fridge freezer OM = Separate oven and microwave
Optional island and wardrobe are not included as standard, available as an upgrade.

DISCLAIMER
There are minor variations to the total size shown for this apartment type based on floor level, please refer to the individual floorplan as provided by your sales team member. Floorplans shown are approximate measurements only, are not to scale and exact layout may vary. Furniture is for visual reference only and not included in the purchase price.



TYPE 2 TWO BEDROOM APARTMENT

777 sq ft | 72.2 sq m

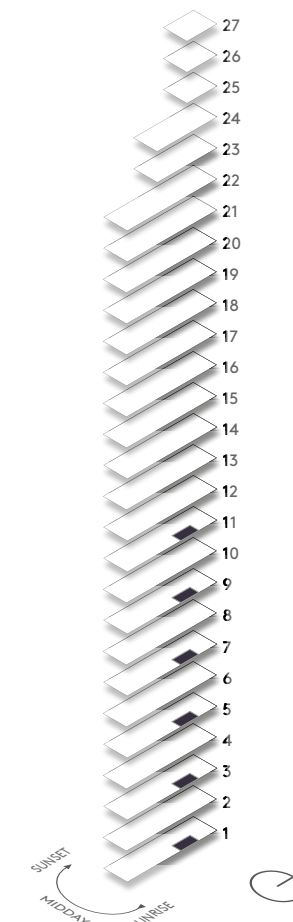
APARTMENTS

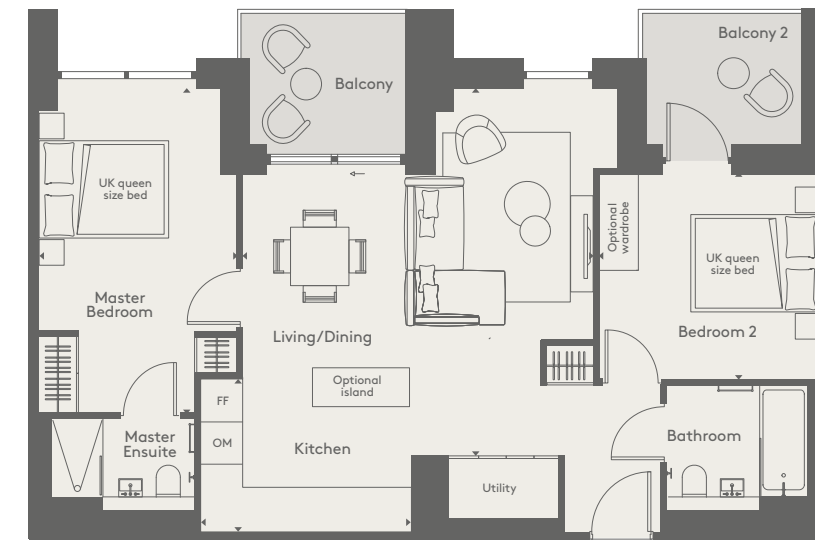
102/303/503/703/903/1103

Kitchen	10'7" x 6'7"	322.6 cm x 200.0 cm
Living/Dining	17'5" (8'2") x 18'0" (10'5")	536.0 cm (259.0) x 550.4 cm (318.0)
Master Bedroom	16'5" x 9'11"	500.5 cm x 303.0 cm
Bedroom 2	11'1" x 10'5"	339.0 cm x 318.0 cm
Balcony	7'7" x 6'4"	230.0 cm x 194.0 cm
Balcony 2	7'0" x 6'4"	213.0 cm x 194.0 cm
Total internal area	777 sq ft	72.2 sq m
Total external area	93 sq ft	8.6 sq m

FF = Fridge freezer OM = Separate oven and microwave
Optional island and wardrobe are not included as standard, available as an upgrade.

DISCLAIMER
There are minor variations to the total size shown for this apartment type based on floor level, please refer to the individual floorplan as provided by your sales team member. Floorplans shown are approximate measurements only, are not to scale and exact layout may vary. Furniture is for visual reference only and not included in the purchase price.





TYPE 2 (ACCESSIBLE) TWO BEDROOM APARTMENT

903 sq ft | 83.9 sq m

APARTMENTS

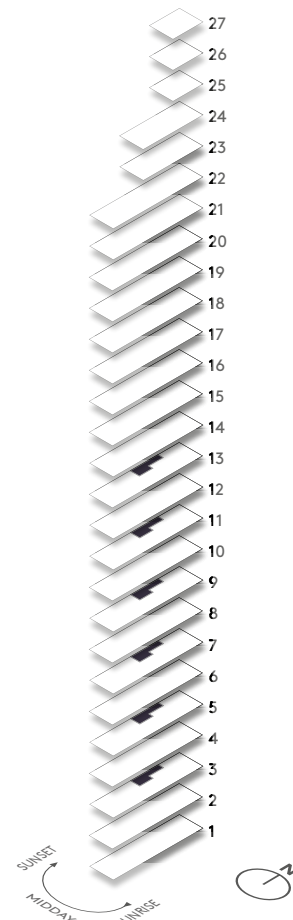
310/510/710/910/1110/1310

Kitchen	10'4" x 8'9"	315.0 cm x 272.7 cm
Living/Dining	27'2" x 12'5" (8'0")	828.5 cm x 377.5 cm (245.0)
Master Bedroom	17'6" x 11'2"	533.5 cm x 342.3 cm
Bedroom 2	12'1" x 8'9"	369.5 cm x 267.5 cm
Balcony	8'8" x 6'4"	265.0 cm x 194.0 cm
Balcony 2	7'10" x 6'4"	239.0 cm x 194.0 cm
Balcony 3	7'0" x 2'0"	213.0 cm x 61.0 cm
Total internal area	903 sq ft	83.9 sq m
Total external area	118 sq ft	11.0 sq m

FF = Fridge freezer OM = Separate oven and microwave
Optional wardrobe is not included as standard, available as an upgrade.

DISCLAIMER

There are minor variations to the total size shown for this apartment type based on floor level, please refer to the individual floorplan as provided by your sales team member. Floorplans shown are approximate measurements only, are not to scale and exact layout may vary. Furniture is for visual reference only and not included in the purchase price.



TYPE 2A TWO BEDROOM APARTMENT

776 sq ft | 72.1 sq m

APARTMENT

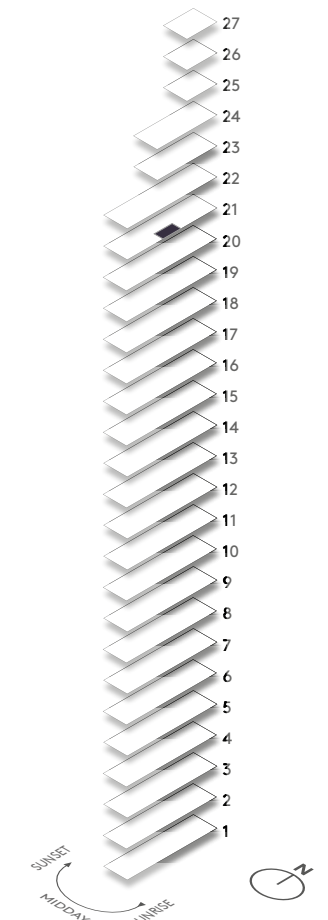
2104

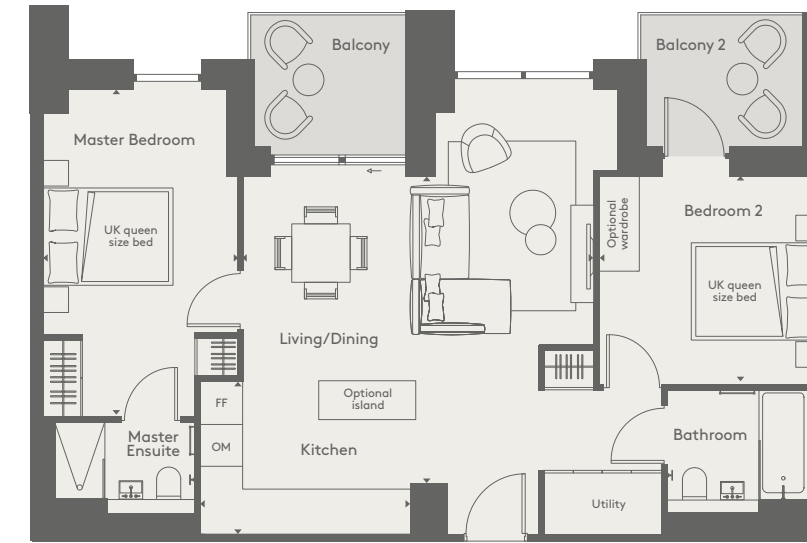
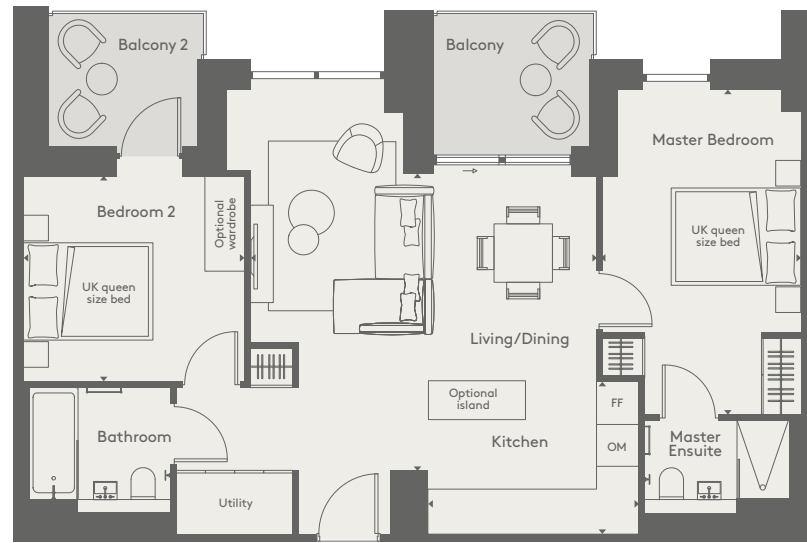
Kitchen	10'7" x 7'7"	322.5 cm x 230.0 cm
Living/Dining	17'7" (7'11") x 18'7" (10'5")	536.5 cm (241.5) x 566.5 cm (317.5)
Master Bedroom	16'5" x 9'11"	500.5 cm x 303.0 cm
Bedroom 2	11'1" x 10'5"	339.0 cm x 318.0 cm
Balcony	7'10" x 6'4"	239.0 cm x 194.0 cm
Balcony 2	7'10" x 6'4"	239.0 cm x 194.0 cm
Total internal area	776 sq ft	72.1 sq m
Total external area	99 sq ft	9.2 sq m

FF = Fridge freezer OM = Separate oven and microwave
Optional island and wardrobe are not included as standard, available as an upgrade.

DISCLAIMER

There are minor variations to the total size shown for this apartment type based on floor level, please refer to the individual floorplan as provided by your sales team member. Floorplans shown are approximate measurements only, are not to scale and exact layout may vary. Furniture is for visual reference only and not included in the purchase price.





TYPE 2B TWO BEDROOM APARTMENT

771 sq ft | 71.6 sq m

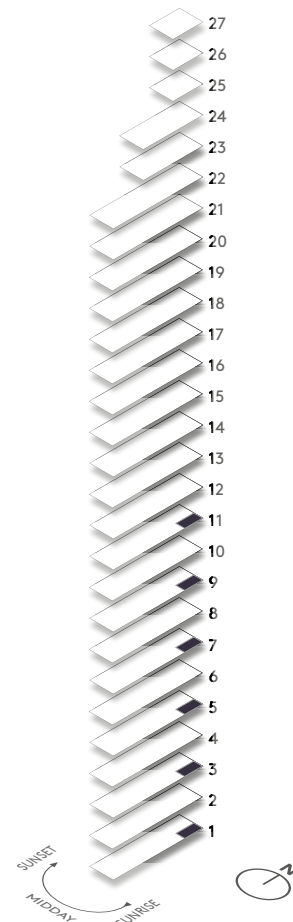
APARTMENTS

101/302/502/702/902/1102

Kitchen	10'7" x 7'7"	322.5 cm x 230.0 cm
Living/Dining	17'4" (7'8") x 14'9" (10'5")	528.5 cm (233.5) x 453.9 cm (318.0)
Master Bedroom	16'5" x 9'11"	500.5 cm x 303.0 cm
Bedroom 2	11'1" x 10'5"	338.0 cm x 318.0 cm
Balcony	7'10" x 6'4"	239.0 cm x 194.0 cm
Balcony 2	7'10" x 6'4"	239.0 cm x 194.0 cm
Total internal area	771 sq ft	71.6 sq m
Total external area	98 sq ft	9.1 sq m

FF = Fridge freezer OM = Separate oven and microwave
Optional island and wardrobe are not included as standard, available as an upgrade.

DISCLAIMER
There are minor variations to the total size shown for this apartment type based on floor level, please refer to the individual floorplan as provided by your sales team member. Floorplans shown are approximate measurements only, are not to scale and exact layout may vary. Furniture is for visual reference only and not included in the purchase price.



TYPE 2C TWO BEDROOM APARTMENT

772 sq ft | 71.7 sq m

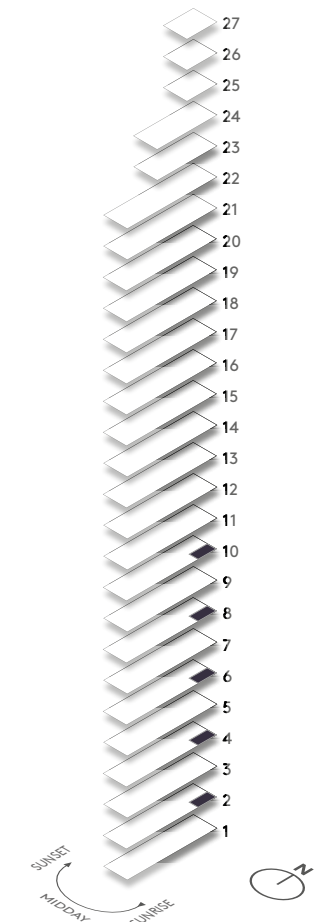
APARTMENTS

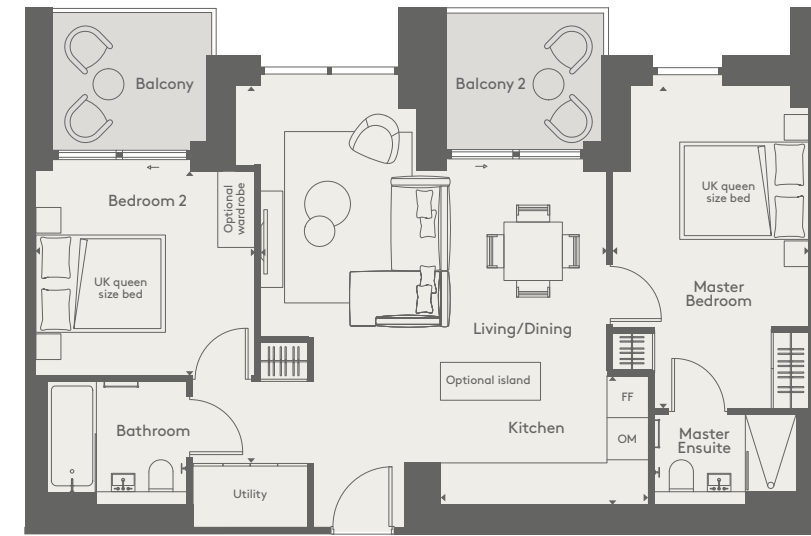
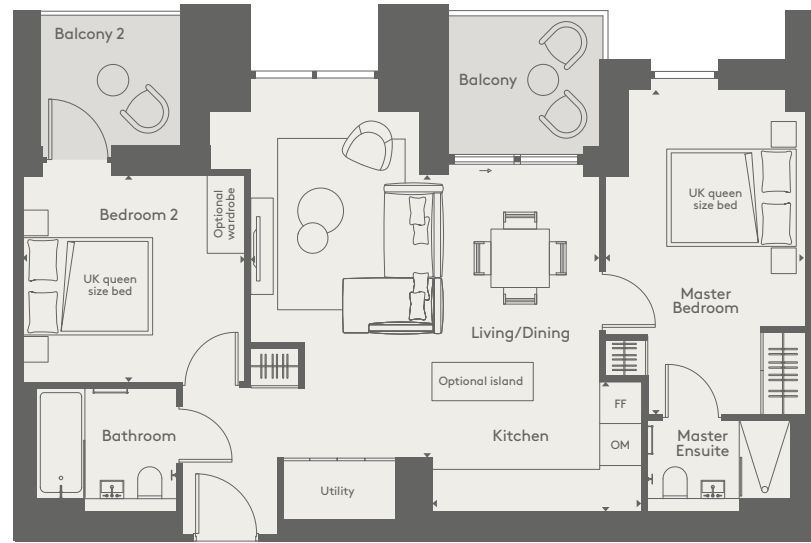
202/402/602/802/1002

Kitchen	10'7" x 7'7"	322.5 cm x 230.0 cm
Living/Dining	17'7" (7'11") x 22'4" (10'4")	537.5 cm (242.5) x 680.5 cm (316.0)
Master Bedroom	16'5" x 9'11"	500.5 cm x 302.0 cm
Bedroom 2	11'1" x 10'5"	338.0 cm x 318.0 cm
Balcony	7'7" x 6'4"	230.0 cm x 194.0 cm
Balcony 2	7'10" x 6'4"	239.0 cm x 194.0 cm
Total internal area	772 sq ft	71.7 sq m
Total external area	98 sq ft	9.1 sq m

FF = Fridge freezer OM = Separate oven and microwave
Optional island and wardrobe are not included as standard, available as an upgrade.

DISCLAIMER
There are minor variations to the total size shown for this apartment type based on floor level, please refer to the individual floorplan as provided by your sales team member. Floorplans shown are approximate measurements only, are not to scale and exact layout may vary. Furniture is for visual reference only and not included in the purchase price.





TYPE 2D TWO BEDROOM APARTMENT

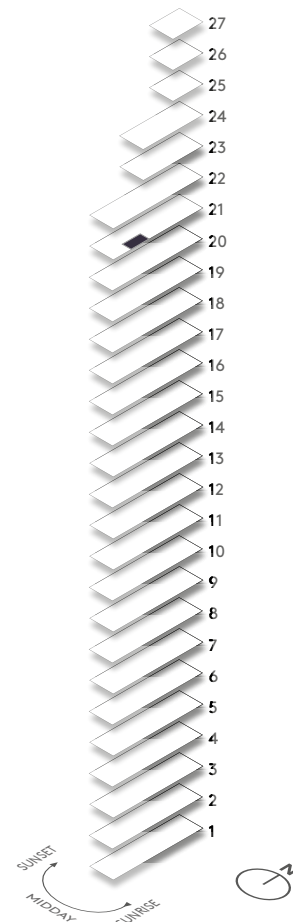
777 sq ft | 72.2 sq m

APARTMENT
2105

Kitchen	10'7" x 6'7"	323.0 cm x 200.0 cm
Living/Dining	17'7" (8'10") x 17'4" (10'5")	536.5 cm (259.0) x 531.3 cm (317.5)
Master Bedroom	16'5" x 9'11"	500.5 cm x 303.0 cm
Bedroom 2	11'1" x 10'5"	339.0 cm x 318.0 cm
Balcony	7'0" x 6'4"	213.0 cm x 194.0 cm
Balcony 2	7'7" x 6'4"	230.0 cm x 194.0 cm
Total internal area	777 sq ft	72.2 sq m
Total external area	93 sq ft	8.6 sq m

FF = Fridge freezer OM = Separate oven and microwave
Optional island and wardrobe are not included as standard, available as an upgrade.

DISCLAIMER
There are minor variations to the total size shown for this apartment type based on floor level, please refer to the individual floorplan as provided by your sales team member. Floorplans shown are approximate measurements only, are not to scale and exact layout may vary. Furniture is for visual reference only and not included in the purchase price.



TYPE 2E TWO BEDROOM APARTMENT

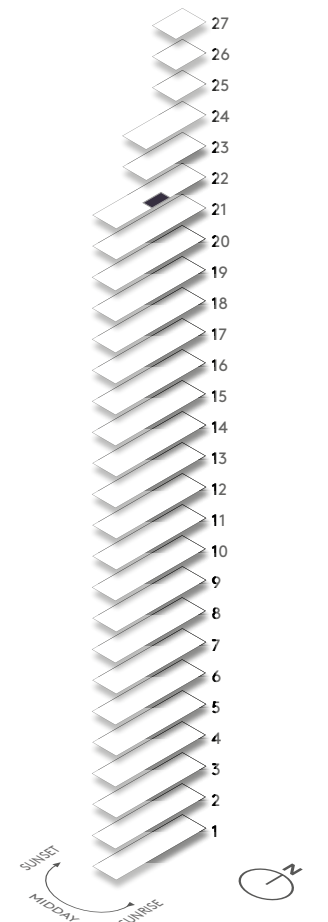
776 sq ft | 72.1 sq m

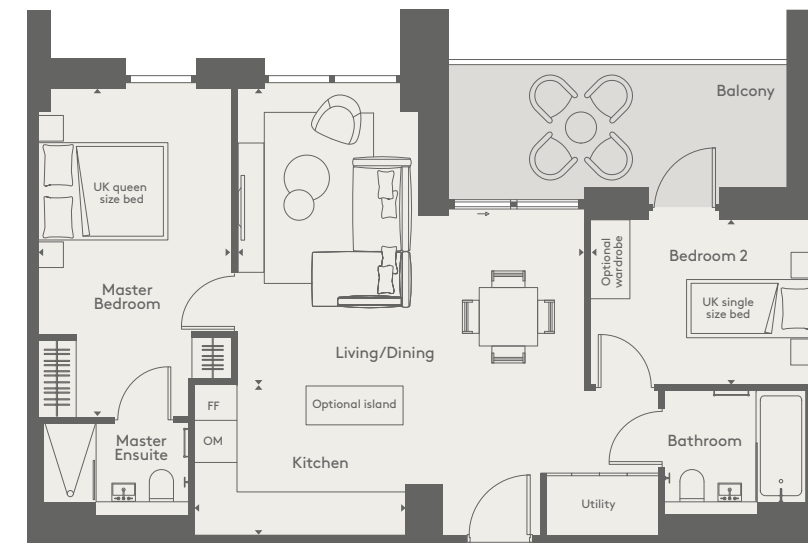
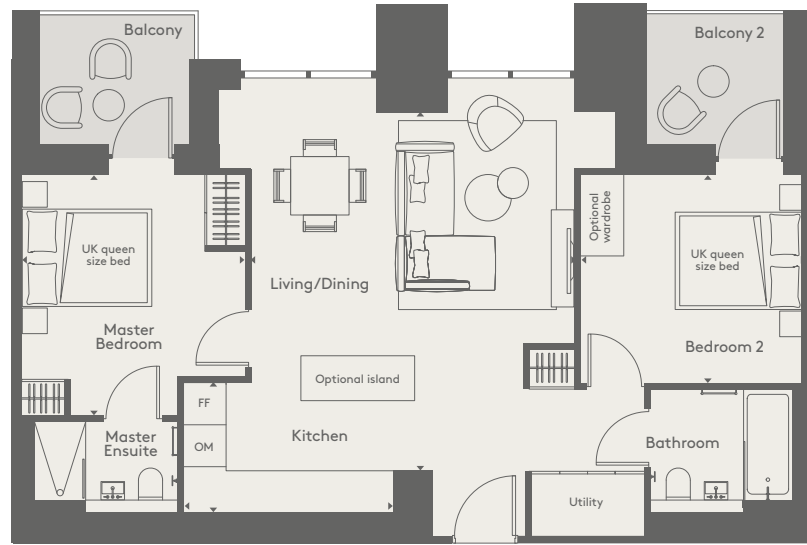
APARTMENT
2204

Kitchen	10'7" x 6'7"	323.0 cm x 200.0 cm
Living/Dining	17'7" (7'11") x 19'3" (10'5")	536.0 cm (242.5) x 586.5 cm (318.0)
Master Bedroom	16'5" x 9'11"	500.5 cm x 303.0 cm
Bedroom 2	11'1" x 10'5"	339.0 cm x 318.0 cm
Balcony	7'8" x 6'4"	239.0 cm x 194.0 cm
Balcony 2	7'11" x 6'4"	241.5 cm x 194.0 cm
Total internal area	776 sq ft	72.1 sq m
Total external area	100 sq ft	9.3 sq m

FF = Fridge freezer OM = Separate oven and microwave
Optional island and wardrobe are not included as standard, available as an upgrade.

DISCLAIMER
There are minor variations to the total size shown for this apartment type based on floor level, please refer to the individual floorplan as provided by your sales team member. Floorplans shown are approximate measurements only, are not to scale and exact layout may vary. Furniture is for visual reference only and not included in the purchase price.





TYPE 3 TWO BEDROOM APARTMENT

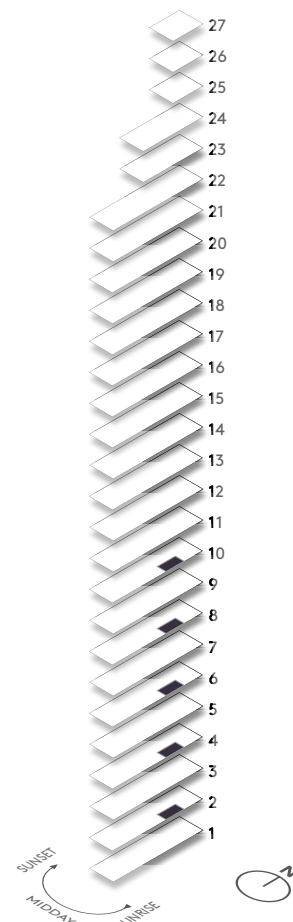
779 sq ft | 72.4 sq m

APARTMENTS
203/403/603/803/1003

Kitchen	10'7" x 6'7"	323.0 cm x 200.0 cm
Living/Dining	16'4" x 18'0"	499.0 cm x 550.3 cm
Master Bedroom	12'0" x 11'2"	368.0 cm x 340.5 cm
Bedroom 2	11'1" x 10'5"	339.0 cm x 318.0 cm
Balcony	7'7" x 6'4"	230.0 cm x 194.0 cm
Balcony 2	7'0" x 6'4"	213.0 cm x 194.0 cm
Total internal area	779 sq ft	72.4 sq m
Total external area	93 sq ft	8.6 sq m

FF = Fridge freezer OM = Separate oven and microwave
Optional island and wardrobe are not included as standard, available as an upgrade.

DISCLAIMER
There are minor variations to the total size shown for this apartment type based on floor level, please refer to the individual floorplan as provided by your sales team member. Floorplans shown are approximate measurements only, are not to scale and exact layout may vary. Furniture is for visual reference only and not included in the purchase price.



TYPE 4 TWO BEDROOM APARTMENT

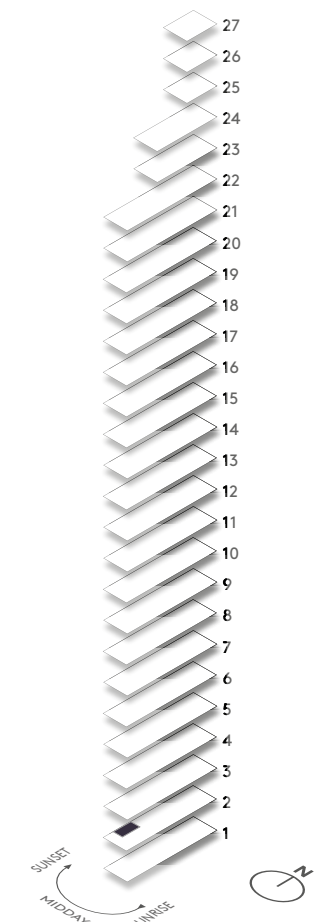
736 sq ft | 68.4 sq m

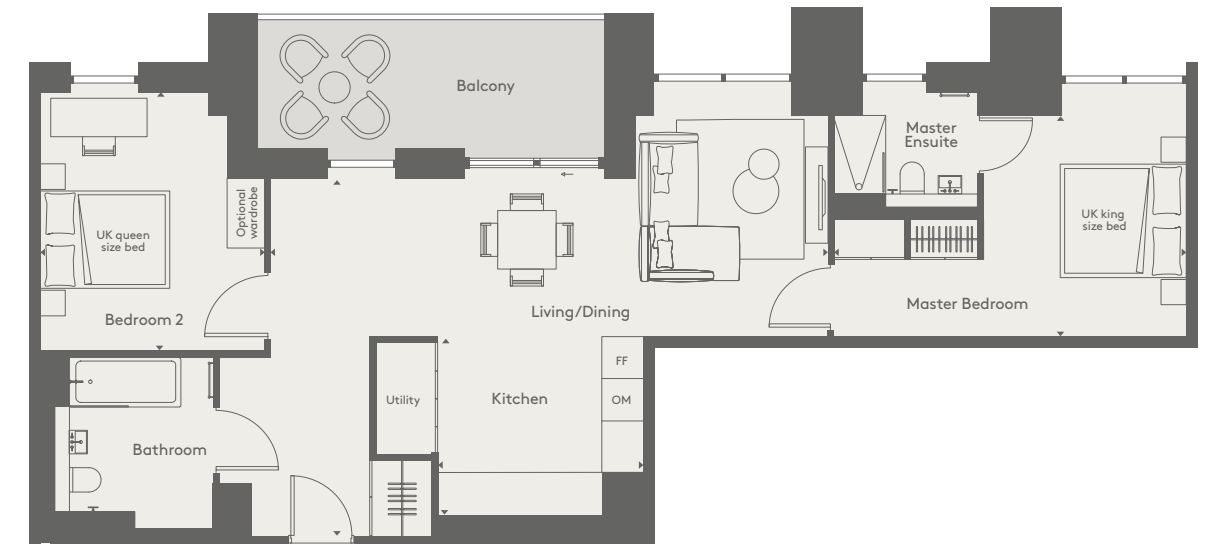
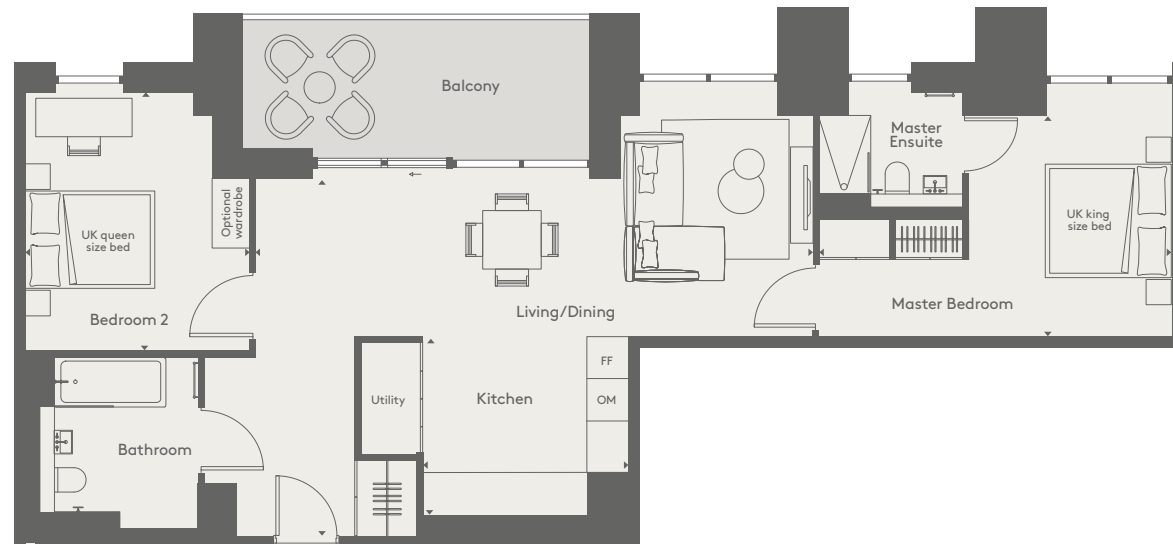
APARTMENT
208

Kitchen	10'7" x 7'7"	322.5 cm x 230.0 cm
Living/Dining	14'7" (82") x 17'5" (105")	448.4 cm (249.0) x 530.0 cm (317.5)
Master Bedroom	16'5" x 9'8"	500.5 cm x 295.0 cm
Bedroom 2	11'3" x 8'4"	345.2 cm x 257.0 cm
Balcony	17'0" x 5'11"	518.0 cm x 180.0 cm
Total internal area	736 sq ft	68.4 sq m
Total external area	100 sq ft	9.3 sq m

FF = Fridge freezer OM = Separate oven and microwave
Optional island and wardrobe are not included as standard, available as an upgrade.

DISCLAIMER
There are minor variations to the total size shown for this apartment type based on floor level, please refer to the individual floorplan as provided by your sales team member. Floorplans shown are approximate measurements only, are not to scale and exact layout may vary. Furniture is for visual reference only and not included in the purchase price.





TYPE 4 + 4B (ACCESSIBLE) TWO BEDROOM APARTMENT

903 sq ft | 83.9 sq m

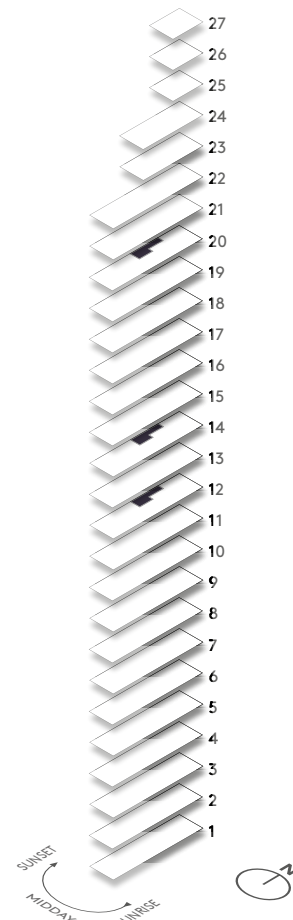
APARTMENTS
1210/1410
2010*

Kitchen	10'4" x 8'11"	315.0 cm x 273.0 cm
Living/Dining	28'0" (9'8") x 17'9" (8'0")	854.5 cm (295.0) x 548.0 cm (245.0)
Master Bedroom	17'6" x 11'3"	533.5 cm x 342.7 cm
Bedroom 2	13'2" x 11'3"	400.5 cm x 343.5 cm
Balcony	17'7" x 6'4"	535.5 cm x 194.0 cm
Total internal area	903 sq ft	83.9 sq m
Total external area	112 sq ft	10.4 sq m

* Apartment 2010 is a Type 4B with a double window façade to bedroom 2 instead of the single window as shown above

FF = Fridge freezer OM = Separate oven and microwave
Optional wardrobe is not included as standard, available as an upgrade.

DISCLAIMER
There are minor variations to the total size shown for this apartment type based on floor level, please refer to the individual floorplan as provided by your sales team member. Floorplans shown are approximate measurements only, are not to scale and exact layout may vary. Furniture is for visual reference only and not included in the purchase price.



TYPE 4A (ACCESSIBLE) TWO BEDROOM APARTMENT

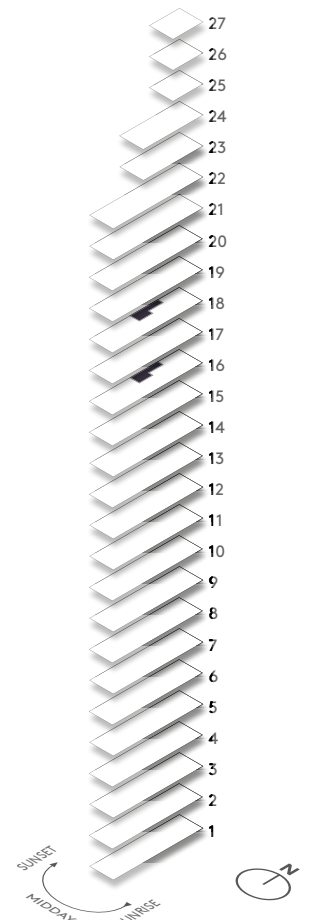
904 sq ft | 84.0 sq m

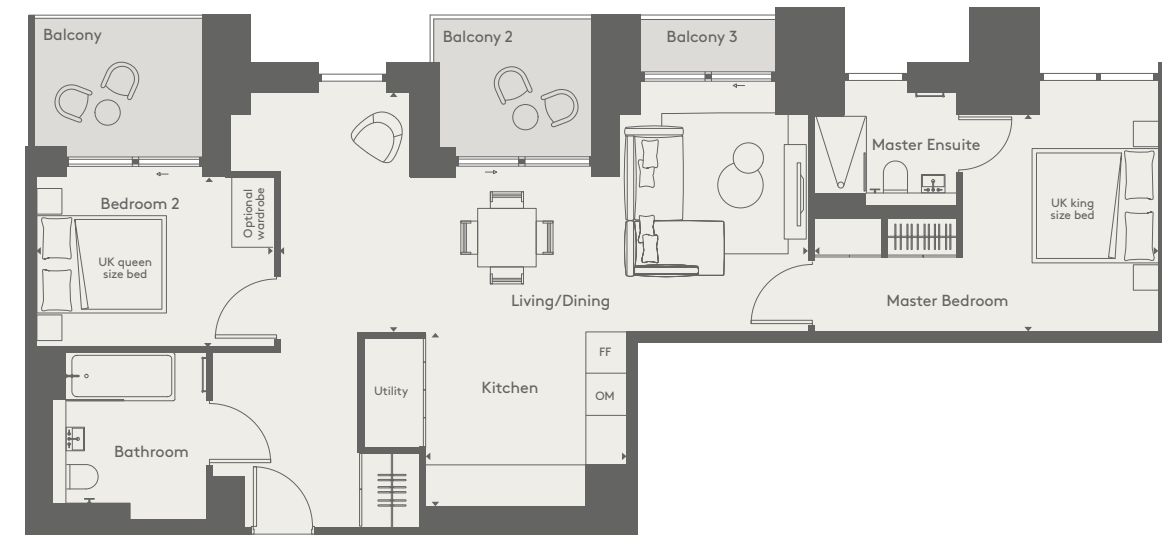
APARTMENTS
1610/1810

Kitchen	10'4" x 8'11"	315.0 cm x 273.0 cm
Living/Dining	28'0" (9'8") x 17'9" (8'0")	854.5 cm (295.0) x 548.0 cm (245.0)
Master Bedroom	17'6" x 11'3"	533.5 cm x 342.7 cm
Bedroom 2	13'2" x 11'3"	400.5 cm x 343.5 cm
Balcony	17'7" x 6'4"	535.5 cm x 194.0 cm
Total internal area	904 sq ft	84.0 sq m
Total external area	112 sq ft	10.4 sq m

FF = Fridge freezer OM = Separate oven and microwave
Optional wardrobe are not included as standard, available as an upgrade.

DISCLAIMER
There are minor variations to the total size shown for this apartment type based on floor level, please refer to the individual floorplan as provided by your sales team member. Floorplans shown are approximate measurements only, are not to scale and exact layout may vary. Furniture is for visual reference only and not included in the purchase price.





TYPE 5 TWO BEDROOM APARTMENT

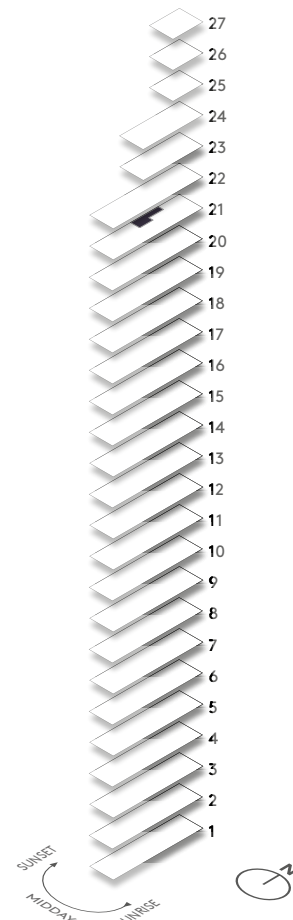
903 sq ft | 83.9 sq m

APARTMENT
2109

Kitchen	10'4" x 8'11"	315.0 cm x 273.0 cm
Living/Dining	27'2" x 22'4" (8'0")	828.5 cm x 680.3 cm (245.0)
Master Bedroom	17'6" x 11'3"	533.5 cm x 342.7 cm
Bedroom 2	12'1" x 10'5"	369.5 cm x 318.0 cm
Balcony	8'8" x 6'4"	265.0 cm x 194.0 cm
Balcony 2	7'8" x 6'4"	239.0 cm x 194.0 cm
Balcony 3	7'0" x 2'0"	213.0 cm x 61.0 cm
Total internal area	903 sq ft	83.9 sq m
Total external area	118 sq ft	11.0 sq m

FF = Fridge freezer OM = Separate oven and microwave
Optional wardrobe is not included as standard, available as an upgrade.

DISCLAIMER
There are minor variations to the total size shown for this apartment type based on floor level, please refer to the individual floorplan as provided by your sales team member. Floorplans shown are approximate measurements only, are not to scale and exact layout may vary. Furniture is for visual reference only and not included in the purchase price.



TYPE 6 (ACCESSIBLE) TWO BEDROOM APARTMENT

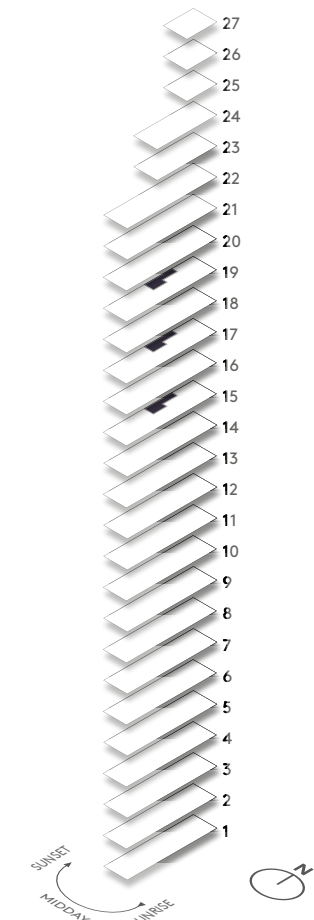
903 sq ft | 83.9 sq m

APARTMENTS
1510/1710/1910

Kitchen	10'4" x 8'11"	315.0 cm x 273.0 cm
Living/Dining	27'2" x 22'4" (8'0")	828.5 cm x 680.3 cm (245.0)
Master Bedroom	17'6" x 11'3"	533.5 cm x 342.5 cm
Bedroom 2	12'2" x 8'9"	370.0 cm x 267.5 cm
Balcony	8'8" x 6'4"	265.0 cm x 194.0 cm
Balcony 2	7'8" x 6'4"	239.0 cm x 194.0 cm
Balcony 3	7'0" x 2'0"	213.0 cm x 61.0 cm
Total internal area	903 sq ft	83.9 sq m
Total external area	118 sq ft	11.0 sq m

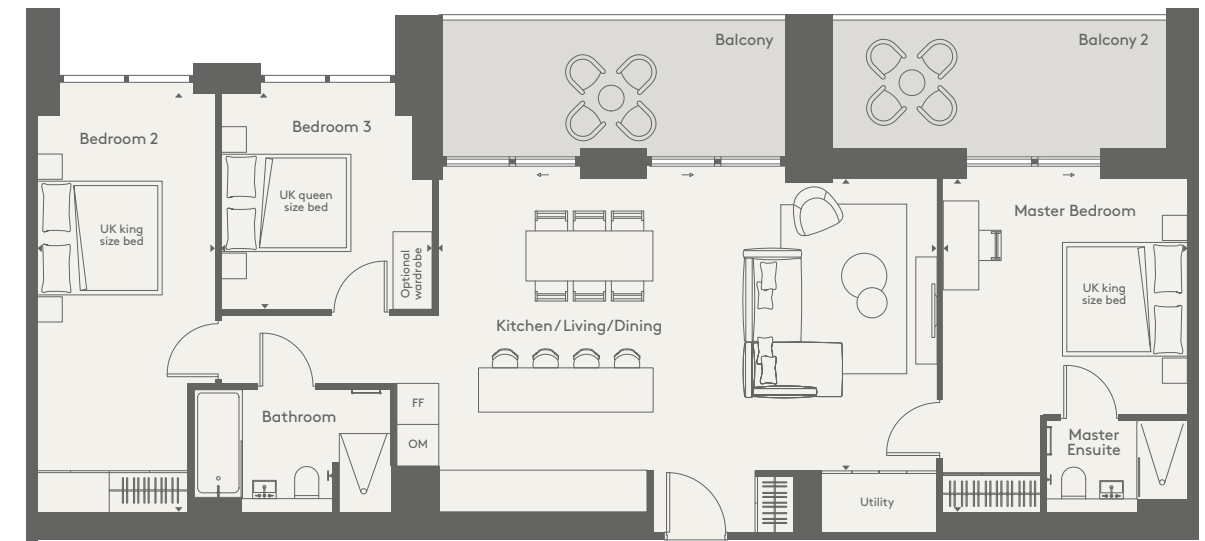
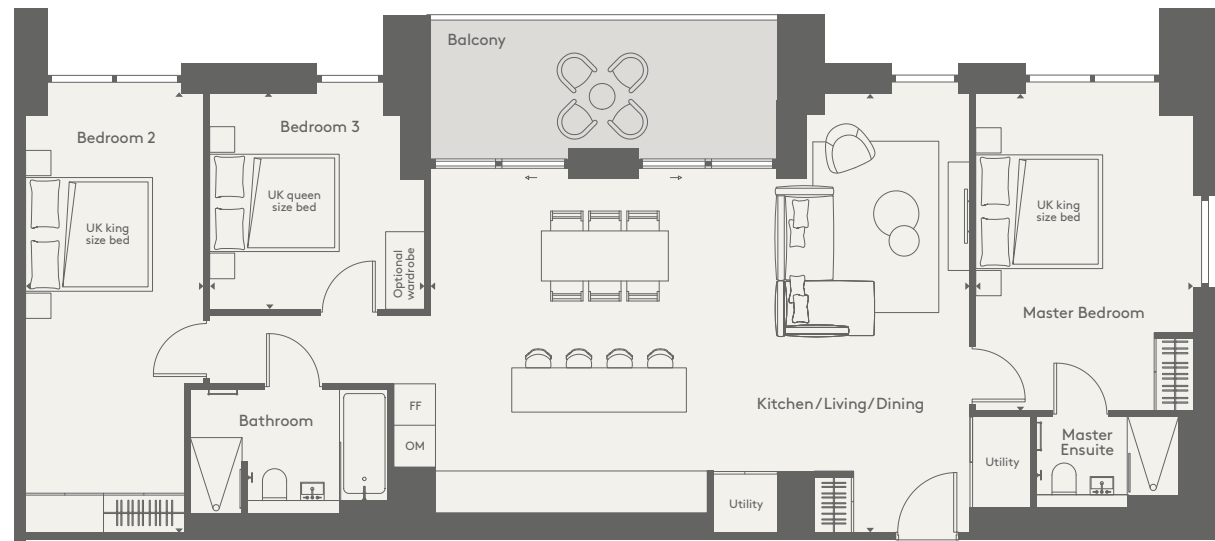
FF = Fridge freezer OM = Separate oven and microwave
Optional wardrobe is not included as standard, available as an upgrade.

DISCLAIMER
There are minor variations to the total size shown for this apartment type based on floor level, please refer to the individual floorplan as provided by your sales team member. Floorplans shown are approximate measurements only, are not to scale and exact layout may vary. Furniture is for visual reference only and not included in the purchase price.





THREE BEDROOM APARTMENTS



TYPE 1 THREE BEDROOM APARTMENT

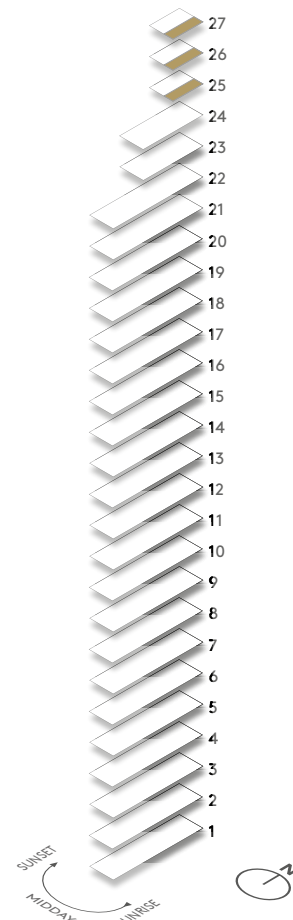
1221 sq ft | 113.4 sq m

APARTMENTS
2502/2602/2702

Kitchen/Living/Dining	27'4" (8'3") x 22'3" (17'6")	834.0 cm (252.0) x 680.5 cm (534.5)
Master Bedroom	16'2" x 11'0"	492.4 cm x 334.5 cm
Bedroom 2	22'4" x 9'0"	680.5 cm x 275.0 cm
Bedroom 3	11'0" x 11'0"	335.5 cm x 332.2 cm
Balcony	17'7" x 6'4"	535.5 cm x 194.0 cm
Total internal area	1221 sq ft	113.4 sq m
Total external area	112 sq ft	10.4 sq m

FF = Fridge freezer OM = Separate oven and microwave
Optional wardrobe is not included as standard, available as an upgrade.

DISCLAIMER
There are minor variations to the total size shown for this apartment type based on floor level, please refer to the individual floorplan as provided by your sales team member. Floorplans shown are approximate measurements only, are not to scale and exact layout may vary. Furniture is for visual reference only and not included in the purchase price.



TYPE 2 + 2A THREE BEDROOM APARTMENT

1129 sq ft | 104.9 sq m

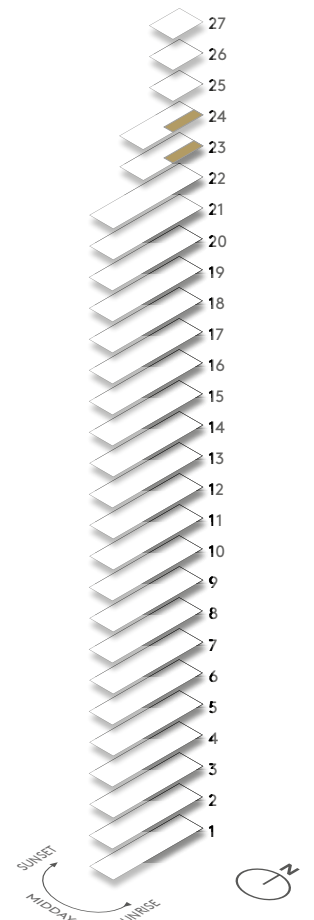
APARTMENTS
2302
2402*

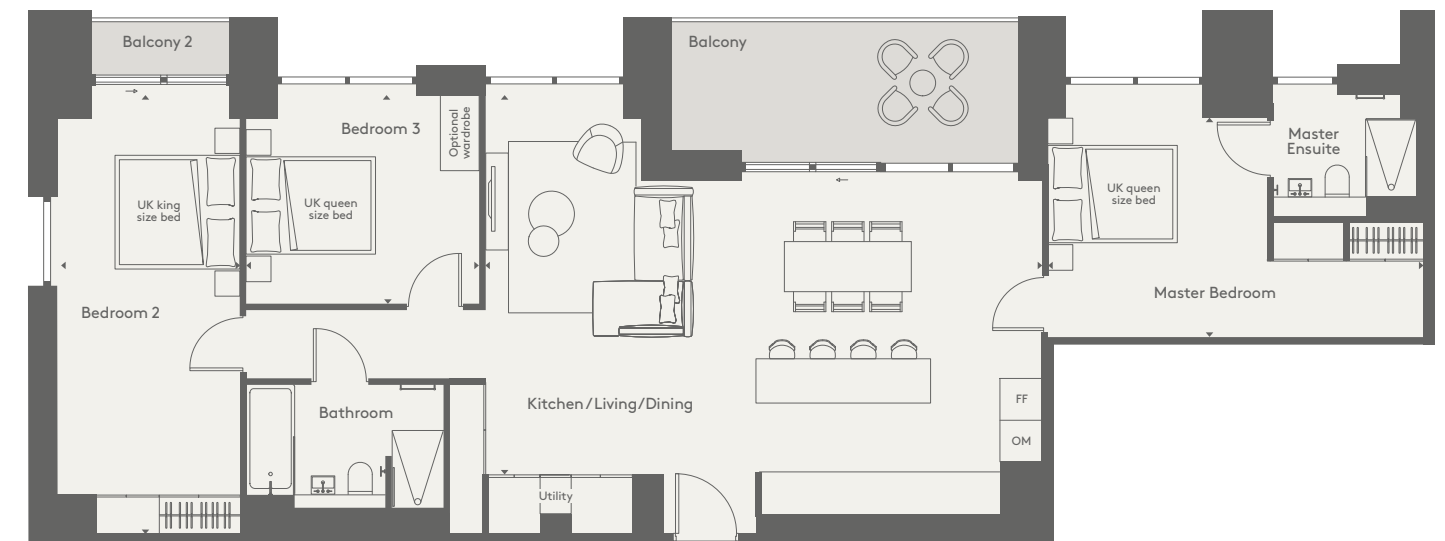
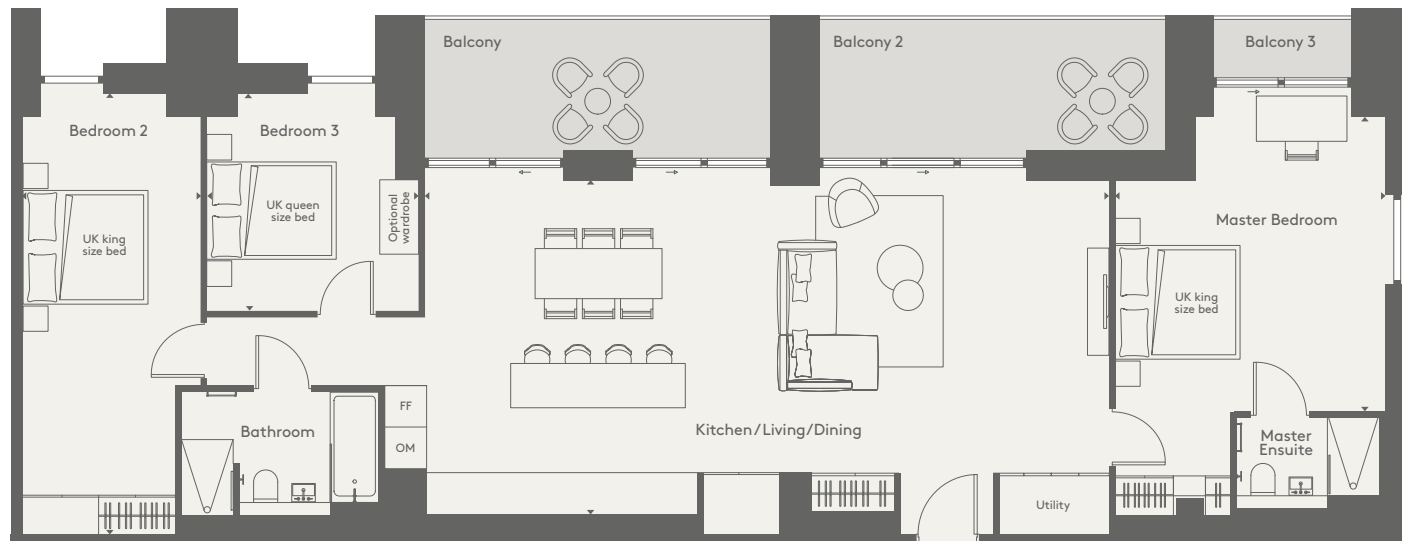
Kitchen/Living/Dining	25'4" x 14'9"	772.5 cm x 454.0 cm
Master Bedroom	17'0" x 12'6"	518.0 cm x 380.5 cm
Bedroom 2	21'4" x 9'0"	650.4 cm x 275.0 cm
Bedroom 3	11'0" x 10'8"	335.5 cm x 327.0 cm
Balcony	17'7" x 6'4"	535.5 cm x 194.0 cm
Balcony 2	17'0" x 6'4"	517.0 cm x 194.0 cm
Total internal area	1129 sq ft	104.9 sq m
Total external area	220 sq ft	20.4 sq m

* Apartment 2402 is handed

FF = Fridge freezer OM = Separate oven and microwave
Optional wardrobe is not included as standard, available as an upgrade.

DISCLAIMER
There are minor variations to the total size shown for this apartment type based on floor level, please refer to the individual floorplan as provided by your sales team member. Floorplans shown are approximate measurements only, are not to scale and exact layout may vary. Furniture is for visual reference only and not included in the purchase price.





TYPE 3 + 3A* THREE BEDROOM APARTMENT

1351 sq ft | 125.5 sq m

APARTMENTS

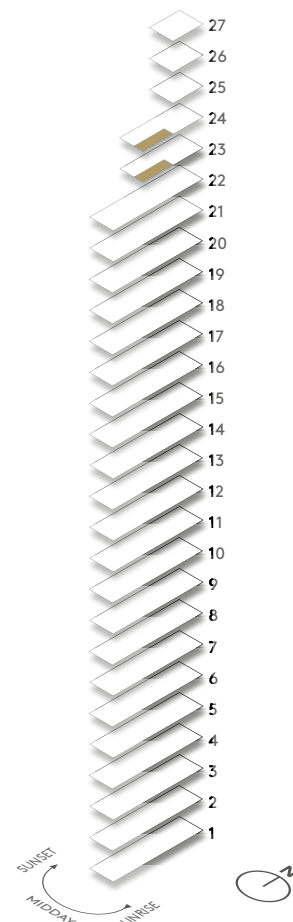
2303
2403*

Kitchen/Living/Dining	34'8" x 17'0"	1057.9 cm x 518.0 cm
Master Bedroom	14'9" x 13'7"	457.2 cm x 418.0 cm
Bedroom 2	22'4" x 9'0"	680.0 cm x 275.0 cm
Bedroom 3	11'0" x 10'8"	335.5 cm x 327.0 cm
Balcony	17'7" x 6'4"	535.5 cm x 194.0 cm
Balcony 2	17'7" x 6'4"	535.5 cm x 194.0 cm
Balcony 3	7'0" x 2'0"	213.0 cm x 61.0 cm
Total internal area	1351 sq ft	125.5 sq m
Total external area	238 sq ft	22.1 sq m

* Apartment 2403 is a Type 3A with a variation to the access to balcony 3 in the master bedroom

FF = Fridge freezer OM = Separate oven and microwave
Optional wardrobe is not included as standard, available as an upgrade.

DISCLAIMER
There are minor variations to the total size shown for this apartment type based on floor level, please refer to the individual floorplan as provided by your sales team member. Floorplans shown are approximate measurements only, are not to scale and exact layout may vary. Furniture is for visual reference only and not included in the purchase price.



TYPE 4 THREE BEDROOM APARTMENT

1246 sq ft | 115.8 sq m

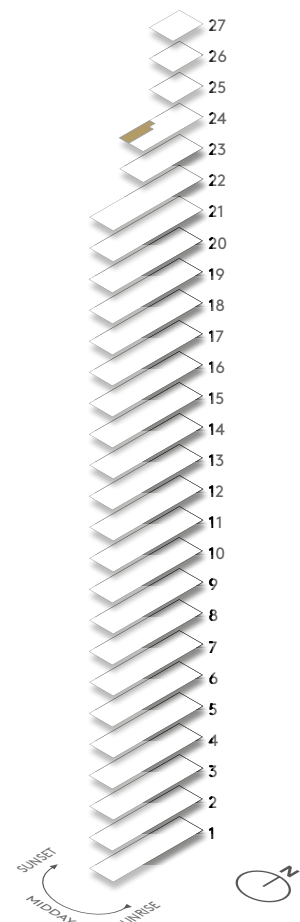
APARTMENT

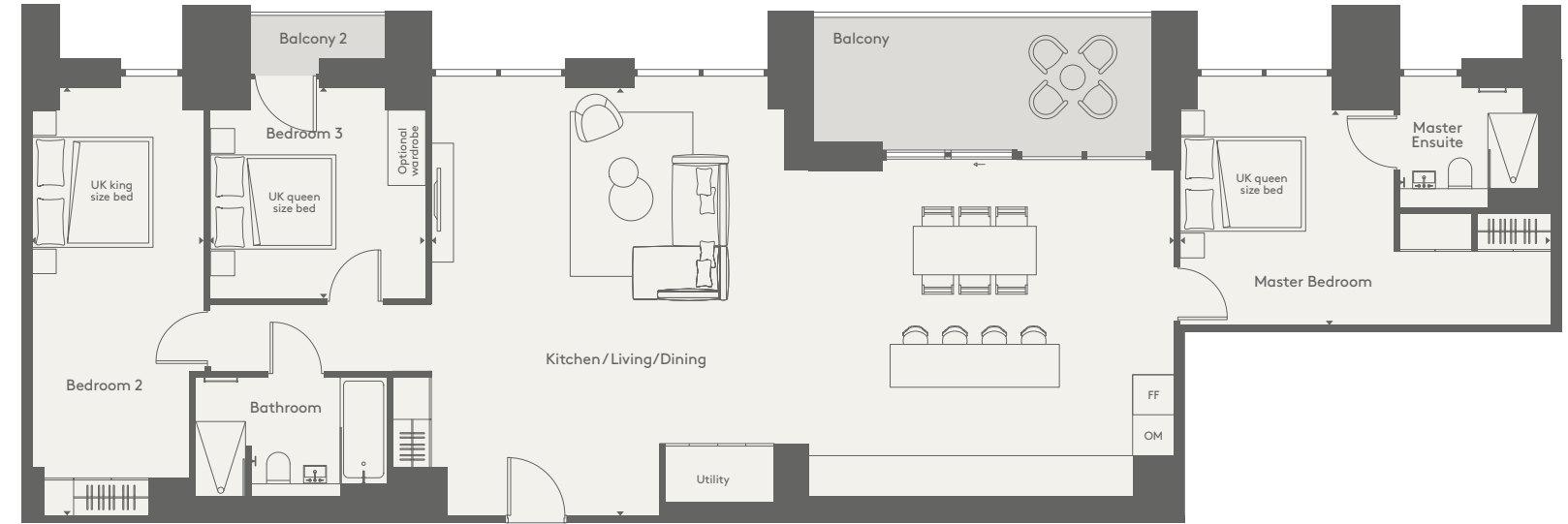
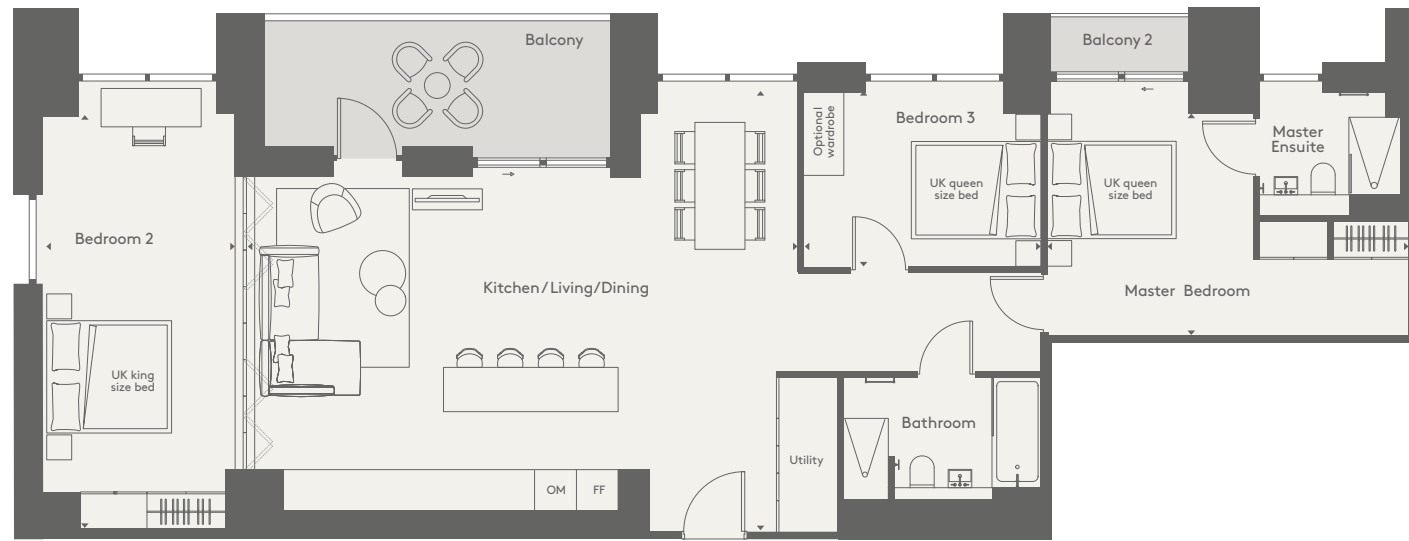
2404

Kitchen/Living/Dining	28'2" (2'11") x 19'3" (1'7")	859.5 cm (242.0) x 586.5 cm (536.0)
Master Bedroom	18'10" x 11'3"	579.0 cm x 342.0 cm
Bedroom 2	21'2" x 9'3"	645.3 cm x 281.5 cm
Bedroom 3	11'10" x 10'8"	360.0 cm x 325.5 cm
Balcony	17'7" x 6'4"	535.5 cm x 194.0 cm
Balcony 2	7'0" x 2'0"	213.0 cm x 61.0 cm
Total internal area	1246 sq ft	115.8 sq m
Total external area	126 sq ft	11.7 sq m

FF = Fridge freezer OM = Separate oven and microwave
Optional wardrobe is not included as standard, available as an upgrade.

DISCLAIMER
There are minor variations to the total size shown for this apartment type based on floor level, please refer to the individual floorplan as provided by your sales team member. Floorplans shown are approximate measurements only, are not to scale and exact layout may vary. Furniture is for visual reference only and not included in the purchase price.





TYPE 5 THREE BEDROOM APARTMENT

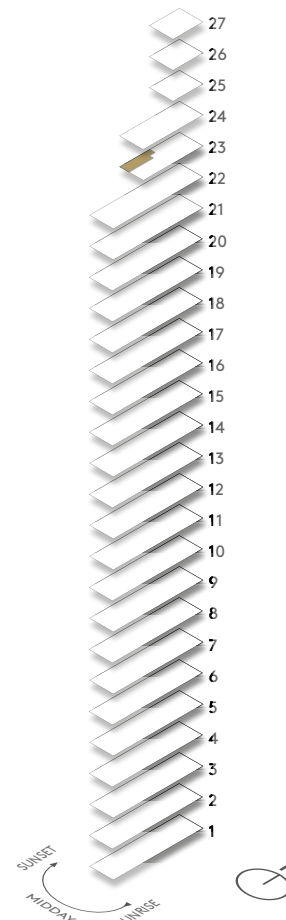
1245 sq ft | 115.7 sq m

APARTMENT
2304

Kitchen/Living/Dining	28'0" (811") x 22'3" (170")	855.0 cm (247.5)	x	680.5 cm (520.0)
Master Bedroom	18'3" x 11'3"	557.0 cm	x	342.5 cm
Bedroom 2	21'2" x 10'0"	645.3 cm	x	307.0 cm
Bedroom 3	12'0" x 8'7"	367.0 cm	x	266.0 cm
Balcony	17'7" x 6'4"	535.5 cm	x	194.0 cm
Balcony 2	7'0" x 2'0"	213.0 cm	x	61.0 cm
Total internal area	1245 sq ft	115.7 sq m		
Total external area	126 sq ft	11.7 sq m		

FF = Fridge freezer OM = Separate oven and microwave
Optional wardrobe is not included as standard, available as an upgrade.

DISCLAIMER
There are minor variations to the total size shown for this apartment type based on floor level, please refer to the individual floorplan as provided by your sales team member. Floorplans shown are approximate measurements only, are not to scale and exact layout may vary. Furniture is for visual reference only and not included in the purchase price.



TYPE 6 THREE BEDROOM APARTMENT

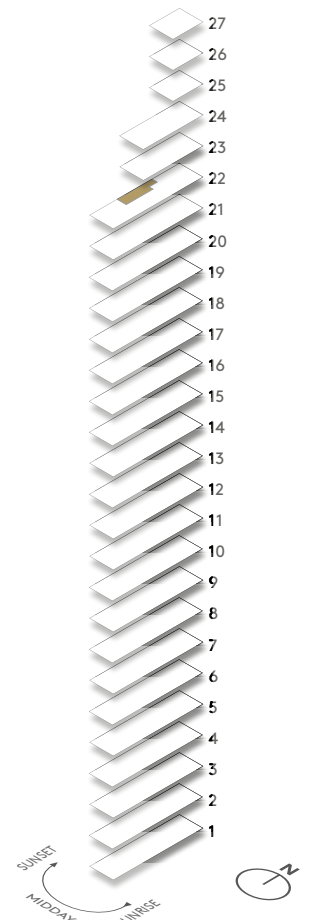
1458 sq ft | 135.5 sq m

APARTMENT
2208

Kitchen/Living/Dining	38'9" (177") x 22'4" (170")	118.10 cm (535.5)	x	680.0 cm (517.5)
Master Bedroom	19'4" x 11'3"	590.0 cm	x	342.5 cm
Bedroom 2	22'4" x 9'0"	680.5 cm	x	275.0 cm
Bedroom 3	11'2" x 10'10"	341.0 cm	x	335.0 cm
Balcony	17'7" x 6'4"	535.5 cm	x	194.0 cm
Balcony 2	7'0" x 2'0"	213.0 cm	x	61.0 cm
Total internal area	1458 sq ft	135.5 sq m		
Total external area	126 sq ft	11.7 sq m		

FF = Fridge freezer OM = Separate oven and microwave
Optional wardrobe is not included as standard, available as an upgrade.

DISCLAIMER
There are minor variations to the total size shown for this apartment type based on floor level, please refer to the individual floorplan as provided by your sales team member. Floorplans shown are approximate measurements only, are not to scale and exact layout may vary. Furniture is for visual reference only and not included in the purchase price.





Computer-generated image for illustrative purposes only. Indicative two bed apartment, metro palette B, kitchen island optional upgrade to specific apartments.



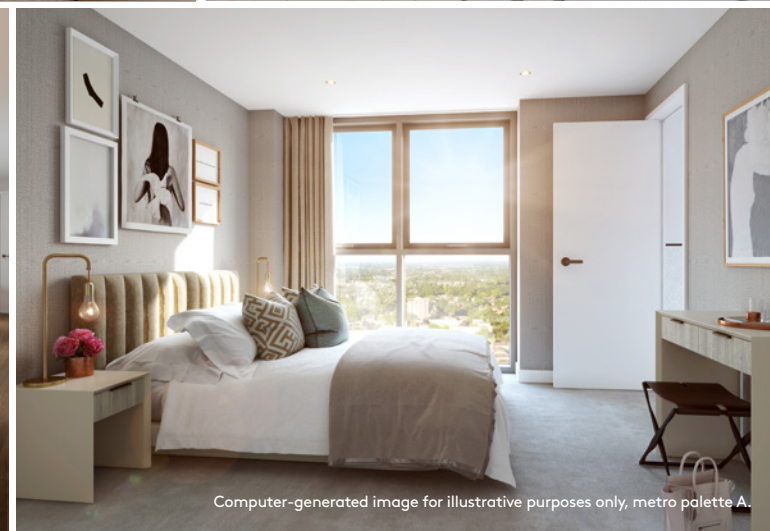
Computer-generated image for illustrative purposes only. Indicative two bed apartment, metro palette B, kitchen island optional upgrade to specific apartments.



Computer-generated image for illustrative purposes only. Typical family bathroom, metro palette A.



Computer-generated image for illustrative purposes only. Indicative three bed apartment, metro palette B.



Computer-generated image for illustrative purposes only, metro palette A.

SPECIFICATION

GENERAL

Entrance door

- Secure timber veneer door with multi locking points, and contemporary metal ironmongery

Internal joinery

- Painted timber doors, timber skirting and timber architrave

Wardrobe

- Fitted wardrobes to master bedroom with internal rail and shelving. Option to purchase for additional bedrooms

KITCHEN/DINING

- Timber cabinetry with a matt lacquer painted finish to doors
- Composite stone worktops with inset sinks
- Tiled splashback
- Hansgrohe or similar brassware
- Bosch or similar appliances to include:
 - Single oven*
 - Microwave oven*
 - Ceramic hob
 - Extractor fan
 - Dishwasher
 - Full height integrated fridge freezer**
- **Two bed:** option to upgrade to include a kitchen island to some two bed apartments
- **Three bed:** includes kitchen island with undercounter storage

UTILITY

- Washer-dryer

BATHROOM/ENSUITE

- Ceramic wall tiles to feature walls
- Wall-mounted ceramic water closet
- Ceramic basin and steel enamel bath or shower tray
- Crosswater or similar brassware
- **Three bed:** includes vanity cupboard to ensuite

FINISHES

- Painted walls and ceilings

FLOORING

- Engineered timber flooring throughout living room, kitchen and hallway areas
- Carpet in bedroom. Option to upgrade to timber flooring
- Tiling to bathrooms and ensuite

HEATING

- Underfloor heating with zoned controls
- Heated towel rail to bathroom and ensuite

ELECTRICAL

- Metal finish sockets and switch plates at high level
- Dimmable lighting to all living and bedroom areas
- TV and data points
- Lighting to balcony

WINDOWS & BALCONY DOORS

- Double-glazed window and doors

SECURITY

- Video entry phone
- Smoke alarm

REFUSE COLLECTION POINT

- Located on the ground floor

PALETTE CHOICES†

Metro palette A

- Light timber flooring
- Light grey colour to kitchen cabinetry
- Metro tile splashback to kitchen
- White tile with light grey pattern to bathroom tile

Metro palette B

- Dark timber flooring
- Mid grey colour to kitchen cabinetry
- Mirror tile splashback to kitchen
- Mid grey tile with white pattern to bathroom tile

* Studio apartments and a limited number of one bedroom apartments have a combination oven and microwave.

** Studio type 2 has an undercounter fridge with ice box.

† Subject to a cut-off date which your customer relations manager will advise.



Computer-generated image for illustrative purposes only, roof terrace subject to planning.

R&F PROPERTIES GROUP

Thanks to our partners for their contribution to Queen's Square: Aedas, Gillespies, Rolfe Judd and Visualisation One.

All enquiries to
sales@queens-sq.com

The particulars in this document are indicative and are prepared for the guidance only of prospective owners, tenants and occupants. They are intended to give a fair overall description of the property but do not constitute a warranty or representation or form part of an offer or contract. Any information contained herein (whether in text, plans, photographs or computer-generated images) is given in good faith and should not be relied upon as being a statement or representation of fact. Any areas, measurements or distances referred to herein are approximate only. All furnishings, wallpaper, curtains and pendant lighting are for illustrative purposes only. Descriptions of a property are inevitably subjective and the descriptions contained herein are used in good faith as an opinion and not by way of statement of fact. Queen's Square is a marketing name and will not necessarily form part of the approved postal address.

Designed by Sectorlight (1808769 - Version 1), sectorlight.com March 2019.

